

UVMS

User Manual

- ※ Contents of this user manual are protected under copyrights and computer program laws.
- ※ Functions or configurations are subject to be changed or modified without prior notice.

1st Edition : 2020. 01
2nd Edition : 2021. 01
3rd Edition : 2024. 01

Thank You!

Before operating the system, please read this User Manual and retain it for future reference.

Contents

1.	UVMS.....	3
1.1	LOGIN.....	3
1.2	SPLASH.....	3
1.3	MAIN LAYOUT.....	4
1.4	TOP PANEL.....	5
1.5	LEFT PANEL.....	5
1.6	RIGHT PANEL.....	6
1.7	BOTTOM PANEL.....	6
2.	REGISTRATION.....	8
2.1	SITE LIST.....	8
2.2	FAVORITE.....	10
3.	LIVE.....	12
3.1	OPEN LIVE SCREEN.....	12
3.2	CLOSE LIVE SCREEN.....	12
3.3	LIVE.....	13
4.	CHANNEL SETTING.....	14
4.1	FISHEYE (* ONLY OPENGL MODE IS AVAILABLE).....	14
4.2	FISHEYE PANORAMA.....	15
5.	BOOKMARK.....	16
5.1	BOOKMARK PLAY.....	16
6.	MASKING TOOL.....	17
7.	DISPLAY.....	18
7.1	ZOOM.....	18
7.2	FREE.....	18
7.3	SPLIT SCREEN MODE.....	19
7.4	GROUP.....	20
8.	MENU ON THE TOP(UPPER LEFT).....	21
8.1	WIDGET(*WINDOWS ONLY).....	21
8.2	LAYOUT.....	21
8.3	EVENT POPUP (1/2).....	22
8.4	EVENT POPUP (2/2).....	23
8.5	E-MAP.....	23
9.	PLAYBACK.....	30
9.1	PLAYBACK EXTRA FEATURES.....	30
9.2	PLAYBACK ICON.....	32
10.	PANORAMA.....	33
10.1	PANORAMA.....	33
10.2	PANORAMA TYPE.....	33
11.	PTZ.....	35
11.1	PTZ.....	35
11.2	PTZ PANEL.....	35

12. RIGHT PANEL.....	36
12.1 DEVICE STATUS	36
12.2 UVMS LOG	37
12.3 DEVICE LOG	37
12.4 SEQUENCE	38
12.5 FULL SCREEN	38
13. LOGVIEWER.....	39
13.1 LOGVIEWER – DATA LOAD.....	39
13.2 LOGVIEWER – AI VIEWER	40
13.3 LOGVIEWER – AI DASHBOARD	40
13.4 LOGVIEWER – AI HEATMAP	41
13.5 LOGVIEWER – PEOPLE COUNTING	42
13.6 LOGVIEWER – PEOPLE COUNTING DETAIL	43
13.7 LOGVIEWER – LPR LOG	43
13.8 LOGVIEWER – GPS, THERMAL, ENVIRONMENTAL SENSOR	44
13.9 LOGVIEWER – CONFIGURATION	45
14. BACKUP	46
14.1 GO TO BACKUP MODE	46
14.2 FILE BACKUP.....	46
14.3 SCHEDULE BACKUP.....	47
14.4 SCHEDULE BACKUP LIST.....	48
14.5 SCHEDULE FTP UPLOAD	49
14.6 SCHEDULE FTP UPLOAD LIST	50
14.7 FILE PASSWORD.....	50
14.8 STREAMING BACKUP.....	51
14.9 FILE PLAYER	52
14.10 BACKUP PLAYER & AVI CONVERTER	53
15. SCREEN / VIDEO RECORDING	54
15.1 SCREEN RECORDING	54
15.2 VIDEO RECORDING.....	54
16. THUMBNAIL SEARCH	55
17. CONFIGURATION	56
17.1 APPLICATION.....	56
17.2 GENERAL.....	57
17.3 DISPLAY	58
17.4 NETWORK	59
17.5 STATUS	60
17.6 EVENT	60
17.7 CHANGE PASSWORD	61
17.8 USER ACCOUNT	62

[Recommended Specification]

Min. PC Specification		Windows	MacOS	Linum(ubuntu)
16ch ~ 32ch	OS	win10 (32/64bit)	10.12 (Sierra)	ubuntu 14.04 LTS ~
	CPU	6th Gen. i3-6300(3.8G)	MacBook Pro 13" (2016)	6th Gen. i3-6300(3.8G)
	Memory	8GB	8GB	8GB
	Video	Built-in Graphics (HD Graphics)	Built-in Graphics (IRIS Graphics)	Built-in Graphics (HD Graphics)
	HDD	500GB~1TB	256GB~	500GB~1TB
	Resolution	1920x1080~	2880x1800~	1920x1080~
Mid. PC Specification		Windows	MacOS	Linum(ubuntu)
32ch ~ 64ch	OS	win10 (64bit)	10.12 (Sierra)	ubuntu 14.04 LTS ~
	CPU	8th Gen. i7-8700(3.2G)	MacBook Pro 15" (2016)	8th Gen. i7-8700(3.2G)
	Memory	16GB	16GB	16GB
	Video	NVIDIA GTX 1660~ (Memory 6GB~)	Radeon R9 M370X~ (Based on MacBook external Video)	NVIDIA GTX 1660~ (Memory 6GB~)
	HDD	500GB~1TB	500GB~	500GB~1TB
	Resolution	(2K) 2560x1440~	2880x1800~	(2K) 2560x1440~
Recommended PC Specification		Windows	MacOS	Linum(ubuntu)
64ch ~ 128ch	OS	win10 (64bit)	10.12 (Sierra)	ubuntu 14.04 LTS ~
	CPU	11th Gen. i7-11700(3.6G)	MacBook Pro 16" (2019)	11th Gen. i7-11700(3.6G)
	Memory	32GB	32GB	32GB
	Video	NVIDIA RTX 2070~ (Memory 8GB~)	Radeon R9 M370X~ (Based on MacBook external Video)	NVIDIA RTX 2070~ (Memory 8GB~)
	HDD	500GB~1TB	500GB~	500GB~1TB
	Resolution	(4K) 3840x2160~	2880x1800~	(4K) 3840x2160~

1. UVMS

1.1 Login



- 1) Login
 - Connect to UVMS with user ID and password
- 2) User Name
 - Input UVMS user ID
- 3) Password
 - Input UVMS user password
 - If the password is incorrect more than 5times, the account will be locked for 1minute.
- 4) Auto Login
 - Check to use Auto Login
- 5) Save User Name
 - Check to save user ID

1.2 Splash



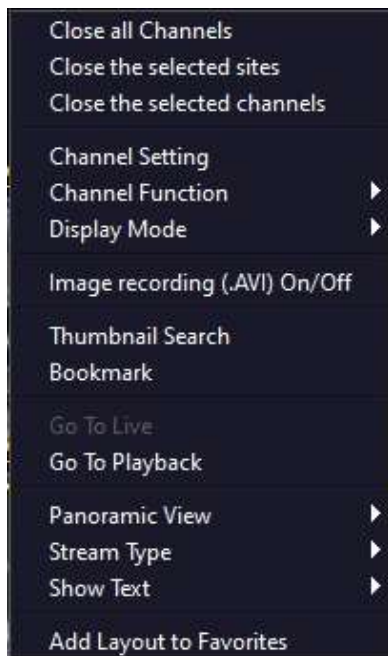
- If Auto Login is set, you would see only splash screen when UVMS is started again.

1.3 Main Layout



Main layout is composed of top panel, left panel, right panel and bottom panel.

1.3.1. Main layout menu



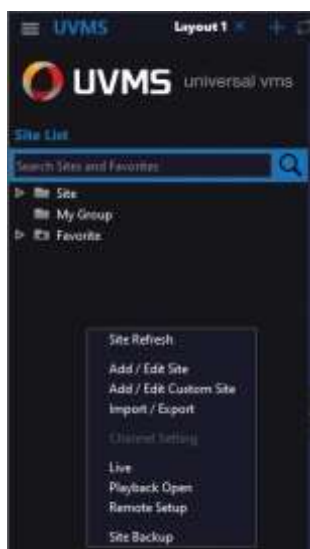
- 1) Close all channels
 - Close all channels on UVMS
- 2) Close the selected sites
 - Close the selected sites on UVMS
- 3) Close the selected channels
 - Close the selected channels on UVMS
- 4) Channel Setting
 - Set the channel's camera type/nickname/comment
- 5) Channel Function
 - Go to D-Zoom/PTZ/Capture/Print/Thermal/Environmental Sensor
- 6) Display Mode
 - Go to View All/1, 4, 9, 16 screen mode
- 7) Image recording(.AVI) on/off
 - If there is the channel to record, focus the channel and click 'Image Recording(.AVI)' then it will be saved as AVI file
- 8) Thumbnail search
 - Search a specific channel with multiple thumbnail images in 1 hour, 2 minutes and 4 seconds unit.
- 9) Bookmark
 - Save channel information, date/time, and comments
- 10) Go to live / playback
 - Go to live or playback mode
- 11) Panoramic view
 - Select channels and make a panoramic view
- 12) Stream type
 - Choose stream type to display – Auto stream, 1st stream and 2nd stream
- 13) Show text
 - Choose the text to display: Site name, channel title, mode, date/time, resolution and bottom background
- 14) Add layout to favorites
 - Make current layout to favorite layout

1.4 Top Panel



Icon	Name	Description
	Top menu bar	Backup, Configuration, etc.
	UVMS Logo	
	Layout tab	
	Close layout	
	Add layout	
	Tab sequence	Tab Sequence Movement
	Program Shortcut	
	Screen Record	Record UVMS operation
	Volume control	Control UVMS audio volume
	Turn ON/OFF Volume	
	Two-way audio	Two-way audio ON/OFF
	Configuration	
	Help	Version Information / UVMS Update and Reinstall
	Fit the Size	Adjust the UVMS screen size
	Minimize	
	Full Screen	
	Exit	

1.5 Left Panel



Icon	Name	Description
	UVMS Logo	
	Device search	Search device or cameras by entering its name
	Device list	Registered site list
	Favorite	Save the current layout into favorite
	Hide/Show	Hide and show left panel
	Popup Menu	For details, refer to '1.5.1 popup menu'

1.5.1. Popup Menu

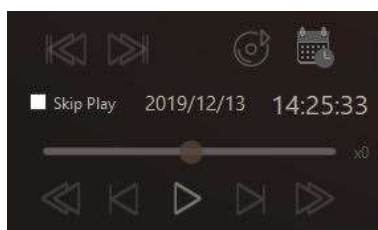
- 1) Site refresh : Refresh site list
- 2) Add/Edit site : Show the 'Site Add /Edit' popup window
- 3) Import/Export : Import and export site list
- 4) Channel Setting
 - Set the channel's camera type/nickname/comment
- 5) Live
 - Choose a site list and click 'Live' to see the live view of all cameras in the site
 - Choose a camera of site list and click "Live" to see the live view of that camera
- 6) Playback Open
 - Choose a site list and click 'Playback Open' to see the playback of all cameras in the site
 - Choose a camera of site list and click 'Playback Open' to see the playback of that camera
- 7) Remote Setup
 - Connect to the Setup Page of Web
 - Access after entering ID and PW
- 8) Site Backup : Show schedule backup window

1.6 Right Panel

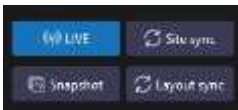


Icon	Name	Description
	STATUS	Check the health status per device
	LOG	System log, device log, LPR log
	1 Mode	1 screen split mode
	4 Mode	4 screen split mode
	9 Mode	9 screen split mode
	16 Mode	16 screen split mode
	All	View All Screen
	Channel shift	Move to previous and next channel
	Full Screen	Monitoring with full screen
	Sequence	Sequence by split-screen
	Back	Back to the previous mode

1.7 Bottom Panel



Icon	Name
	Go to first play / last play
	Backup Player
	Calendar
	Skipping playback
	Date and time
	Speed Control
	Playback Control

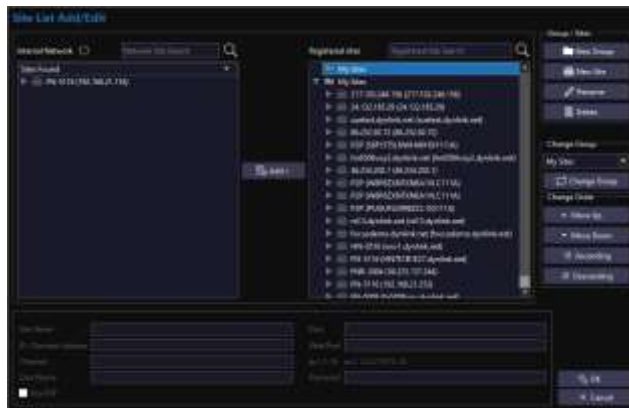


Name	Description
Zoom	In/out
Focus	+ / -
Iris	+ / -
Speed	Normal, Low, Fast
Preset	preset setup and move (1~199)
Guard Tour	Move to set presets in sequence
Relay	Send Relay signal
LIVE	Move the timeline to the current time
Site sync	Synchronize all channels of same site based on focused channel
Snapshot	Snapshot ON / OFF
Layout sync	Synchronize all channels of all same sites based on focused channel

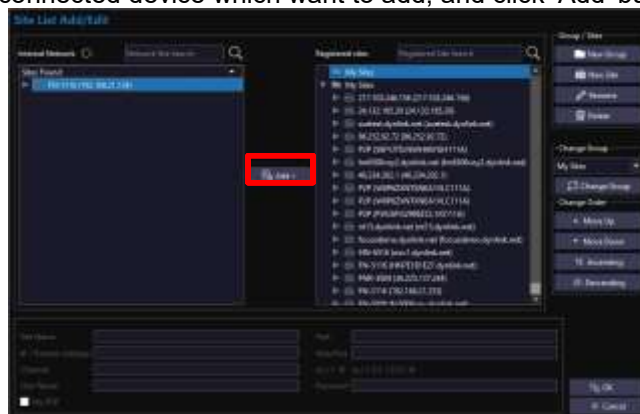
2. Registration

2.1 Site List

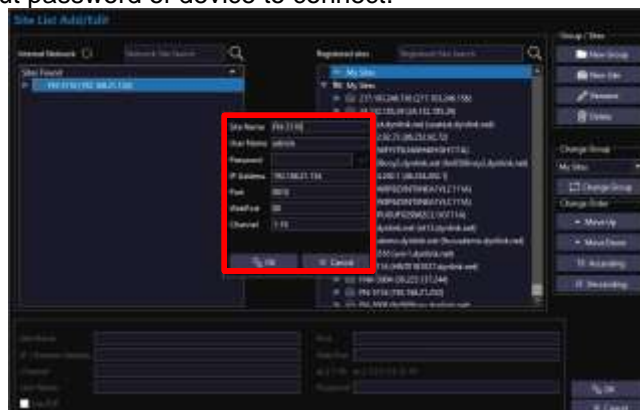
2.1.1. Site Add/Edit (1/2)



- 1) Site search function
 - Search all devices connected to network automatically
 - Refresh for new device
- 2) Site add function
 - Choose connected device which want to add, and click 'Add' button



- When choose 'Add' button, password input window is open.
- User input password of device to connect.



- If device registration is successful, connected device is showed up on registered

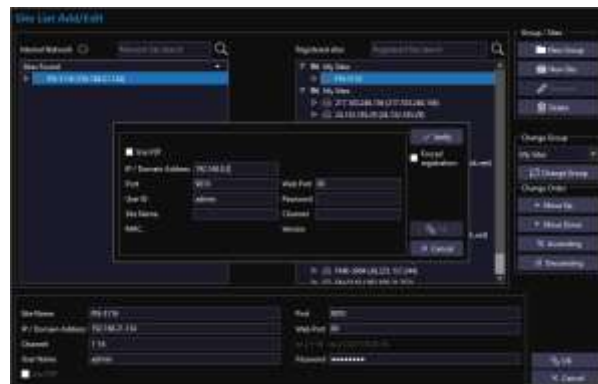
sites list and device information is shown in the below.



3) Site edit function

- Click information column to modify.
- If user edits the number of channel, it is displayed as the number of channel which user sets
- Click 'OK' button to complete edition.

2.1.2. Site Add/Edit (2/2)



1) New group

- Add new group in the list
- Add new group at the out of existing group when you check 'Add to Root'

2) New Site

- Add new site manually



- Input IP Address, Port, Web Port, User ID and Password
- After inputting the device information, click 'Verify'. If the information user entered is correct, Site name / Channel / Mac. / Version information will be shown as below

- 3) Rename
 - Edit group or site name
- 4) Delete
 - Delete the group or site
- 5) Change Group
 - Move group or site into other group
- 6) Move up
 - Site name goes up in the list
- 7) Move down
 - Site name goes down in the list

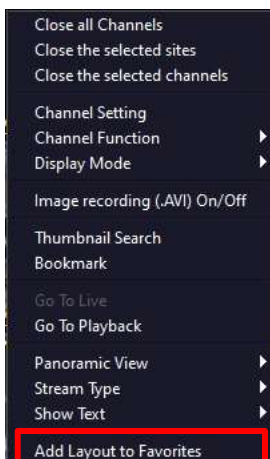
2.1.3. Site List



- 1) Site list
 - Once Add/Edit site process is done, site list will be shown.
- 2) Layout open (site)
 - If you drag sites on layout, all cameras included in the site will be displayed
- 3) Layout open (camera)
 - If you press Ctrl + left mouse button click or Shift + left mouse button click on desired cameras and drag on the layout, those selected cameras will be displayed

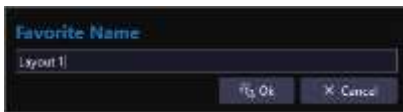
2.2 Favorite

2.2.1. Favorite



- 1) Add the current screen to 'Favorites' menu
- 2) After making your own layout and clicking right mouse button, choose 'Add Layout to Favorite' to create your own favorite layout

2.2.2. Add Favorite



- 1) When you choose 'Add Layout to Favorites', favorite name edit window will popup
- 2) Enter the name and then the favorite name will be shown up at left panel

2.2.3. Open Favorite



- 1) In case of dragging created Favorite on the layout window, a new layout tab with the same layout name will be shown up
- 2) While a Favorite Window is open, you can add more cameras and rearrange the layout

2.2.4. Delete Favorite



- 1) Edit favorite list
After right mouse button click on the title of favorite list, you can remove it by clicking 'Edit favorite list' → 'Remove Favorite'

※ If user wants to rename the favorite, click 'Rename Favorite'



2) Favorite Scheduler

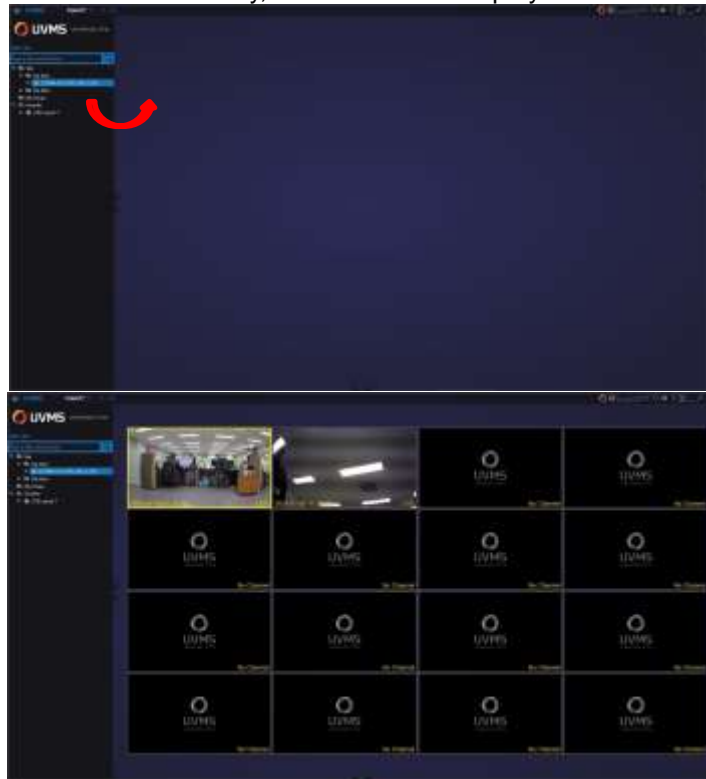
After right mouse button click on the title of favorite list, you can set schedule by clicking 'Favorite Scheduler'

Day/Time to monitor can be set with mouse drag.(Colored with Yellow.)

3. Live

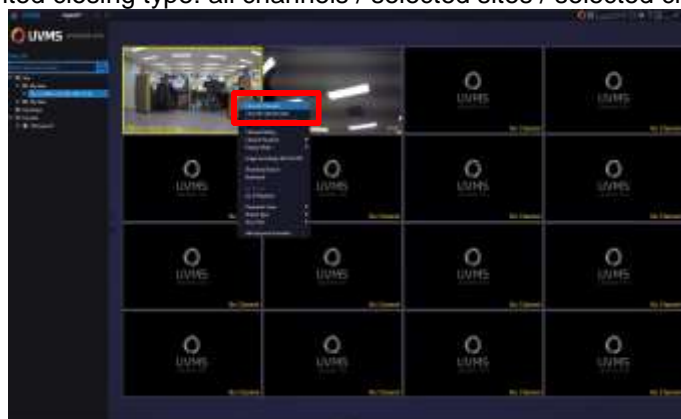
3.1 Open Live Screen

- 1) After registering the site, dragging the site to right to connect
- 2) If the site is connected normally, a live screen is displayed.



3.2 Close Live Screen

- 1) To close the site, mouse right-click on live screen
- 2) Select wanted closing type: all channels / selected sites / selected channels



3.3 Live



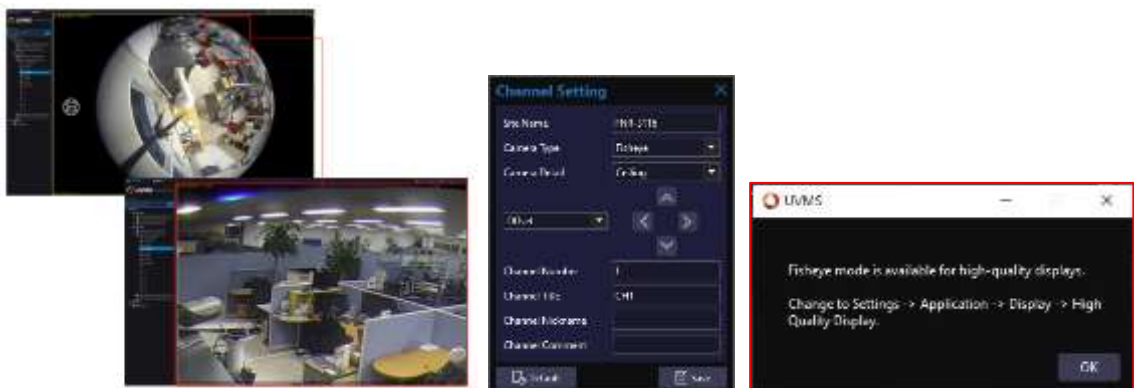
Icon	Name	Description
	Information	Information of channel
	PTZ	8-direction Zoom in/out
	D-Zoom	Digital Zoom in/out by using wheel of mouse
	Print	Print current channel
	Snapshot	Capture current channel
	Close	Close the channel
	Select	Selected channel is changed into yellow color Multi Channels could be selected by mouse dragging
	Channel status	Status of current channel, PTZ, D-zoom, Date/Time and Resolution
	Dropdown	When the screen is small, the top menu is shown in 'Dropdown' type

4. Channel Setting



- Click the right mouse button on the site list or display channel and select 'Channel Setting' to setting the channel
- Set camera type, nickname, comment and so on.
- Camera Type : Normal, PTZ, Fisheye

4.1 Fisheye (* Only OpenGL mode is available)



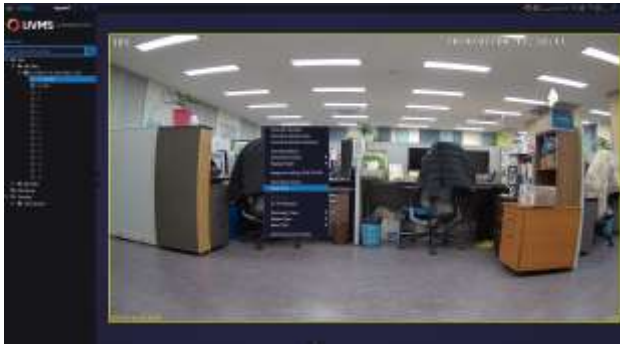
- Change camera type to Fisheye
- Camera detail can be set as Ceiling/Table/Wall. And Offset/Ellipticity can be set by button control.
- Mouse operation can change round image to flat image.

4.2 Fisheye Panorama



- With the mode icon in the channel, display mode can be changed to normal fisheye mode and Panoramic mode(90°/180°/360°).
- Move the channel image with mouse drag operation and see the wide spread image.
- Zoom In/Out can be controlled by mouse wheel.

5. Bookmark



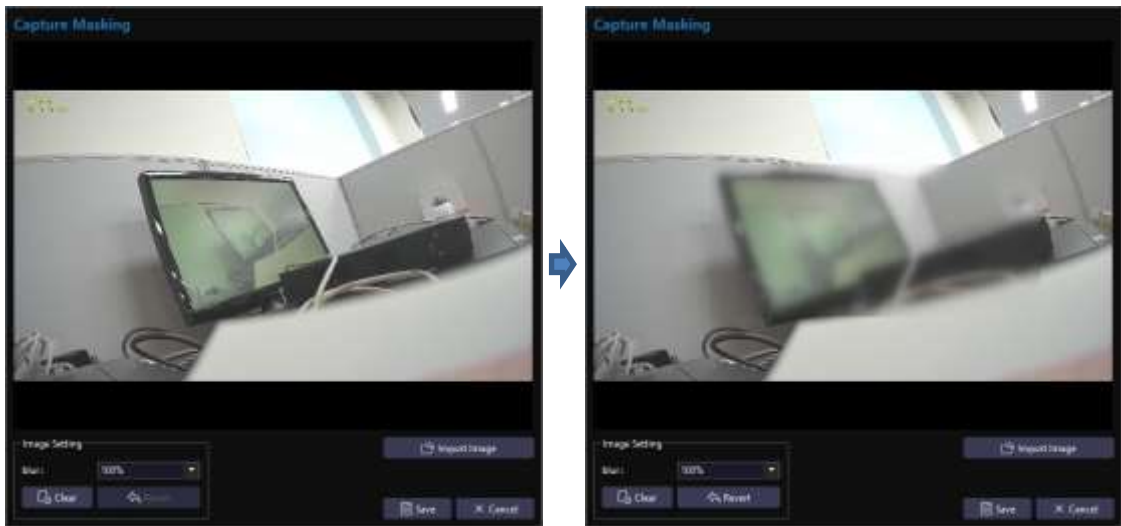
- Open Bookmark screen through the pop-up menu on the open channel or time table.
- Save channel information, date/time and comment.
- When the bookmark is opened in the channel, the current data/time is set. When the bookmark is opened in the time table, the date/time of the clicked position is set.
- After saving, date/time and comment can be adjusted in the list.

5.1 Bookmark Play



- Select the bookmark in the list and drag/drop it to the main layout to play.

6. Masking Tool



- (1) Click 'Masking Tool' in the menu(Configuration > Application)
- (2) Import saved image and apply masking for the desired position by mouse drag and save.
- (3) Remove masking position with 'Clear' button.
- (4) Cancel masking position step by step with 'Revert' button. (Max. 10 times.)

7. Display

7.1 Zoom



- 1) Zoom in/out can be controlled by mouse wheel operation
 - Wheel up and down for zoom in and out of the screen
 - If you Zoom in the screen, the stream will be changed from sub into main
 - In the Zoom-in screen, screen is moving as zoomed-in status.
 - If you double click at the background, the layout will be rearranged

7.2 Free



- 1) Channel Swap
 - Two channels are interchangeable
 - Changing with dragged and dropped channel



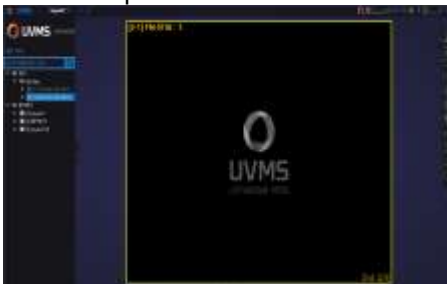
- 2) Adjust channel size
 - If the mouse cursor is located at the corner, the cursor will be changed and the screen size can be adjusted.



- 3) Free Screen layout
 - User can change the size of the screen and position as user wants
 - Default is standard split mode
- 4) Display
 - Choose multiple channels by mouse drag
 - Ctrl + left mouse button to choose multiple channels
 - Enlarge or shrink display size by using wheel of mouse
 - Double click to make the channel in full screen mode

7.3 Split Screen Mode

1) 1 screen split mode



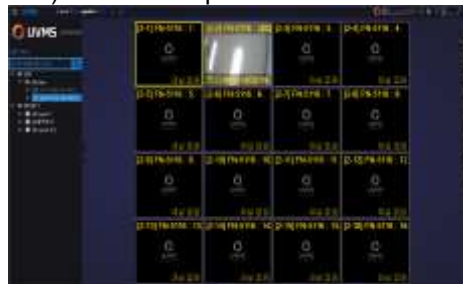
2) 4 screen split mode



3) 9 screen split mode



4) 16 screen split mode



- All screen : Rearrange all channels on current layout

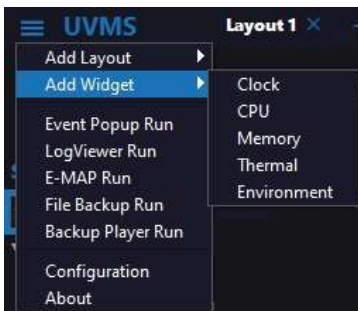
7.4 Group



- 1) While the multiple sites are displayed, user can classify which channels are in the site by clicking left mouse button for about 2~3 seconds. Border line color will be changed into blue

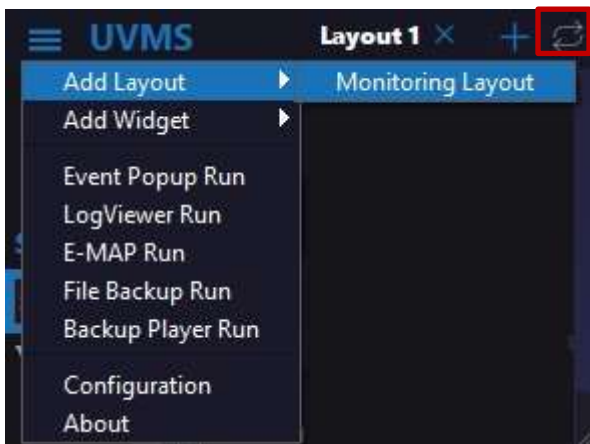
8. Menu on the Top(Upper Left)

8.1 Widget(*Windows Only)



- In the top menu, add clock, CPU and memory widget on the screen.
- User can change the size and position of widget as user want.

8.2 Layout



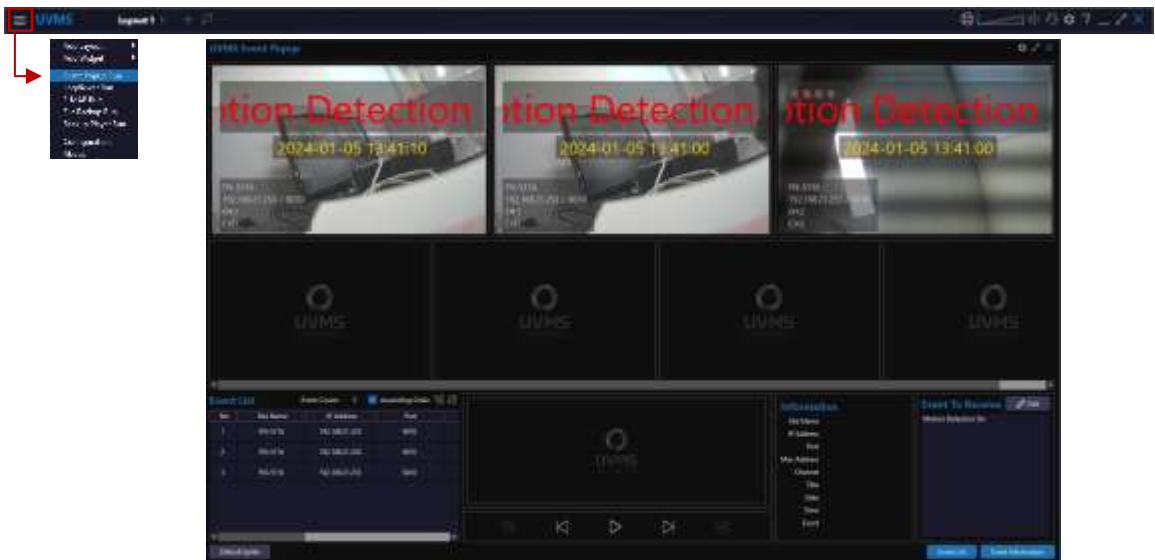
(1) Add Layout

- Click 'Menu > Add Layout > Monitoring Layout' to create new layout.
- Click '+' icon on the top.

(2) Layout Sequence

- Click Sequence icon.
- Interval can be set in between 5~3,600seconds in the menu(Configuration > Display)

8.3 Event Popup (1/2)



- 1) Open Popup Screen
 - Click 'Event Popup Run'.
 - When the event comes to UVMS, the related channel pops up in the popup screen. And playback for the channel and information checking is available.
- 2) Event Thumbnail
 - The last 7 events are shown in the screen.
 - When the thumbnail is clicked, related information checking and playback is available.
 - Channel size can be adjusted
- 3) Default Split
 - Make the current screen as a default.
- 4) Event List
 - Show event list.
 - Each event can be playback by double click on the list or click playback in right mouse button menu.
 - All events or each event can be deleted with right mouse button click.
 - Adjust column to display can be selected with right mouse button click.
 - Event list order can be controlled.
 - No. of event received can be checked.
- 5) Playback
 - Playback can be done from the event thumbnail or event list.
 - Image control(Zoom, Capture, Record & Play) is available.
- 6) Information
 - Information on the event which is selected in the list is shown.

8.4 Event Popup (2/2)



- 1) Event To Receive
 - It shows the event list which will receive at UVMS.
- 2) Event List
 - Click 'Edit' button
 - Select Event to receive and click 'Event Add' button.
 - Select Event not to receive and click 'Remove' button.

8.5 E-Map

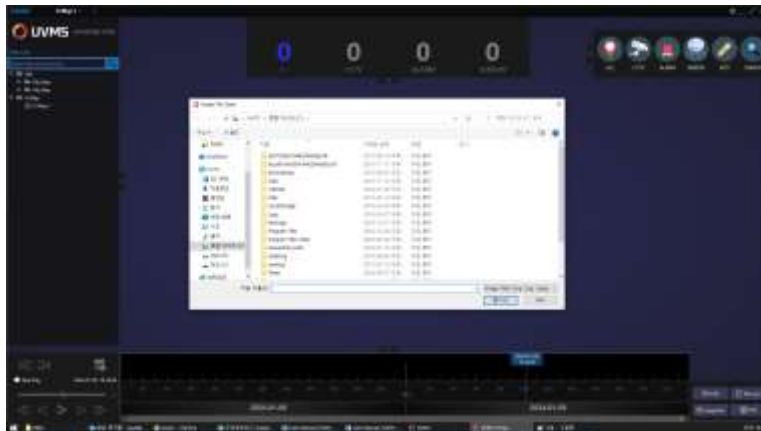
8.5.1. E-Map Main Layout]



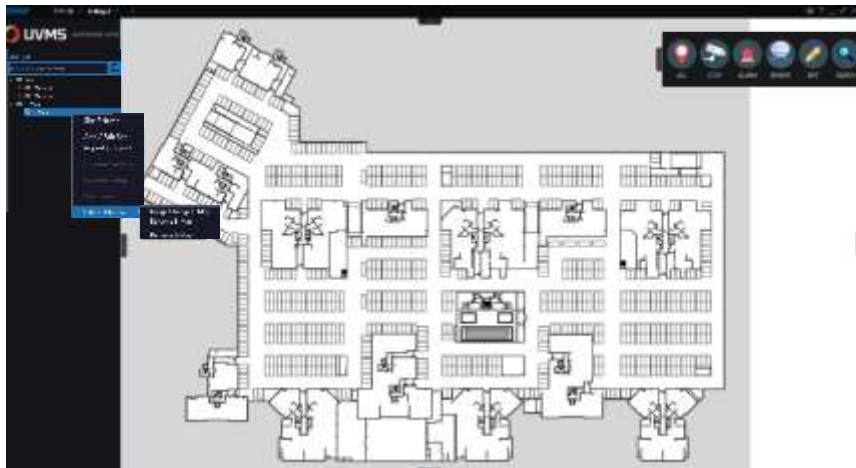
- (1) Top Menu
 - E-Map Name
 - E-Map System Information
- (2) Left Panel
 - Site Search
 - Site List
 - E-Map List

- (3) Right Panel
 - ALL
 - CCTV
 - ALARM
 - SENSOR
 - EDIT
 - SEARCH
- (4) Bottom Panel
 - First Data Play
 - Last Data Play
 - Calendar
 - Skip Play
 - Search/Play
 - Search/Play Controller
 - Time Table

8.5.2. E-Map Open & Edit

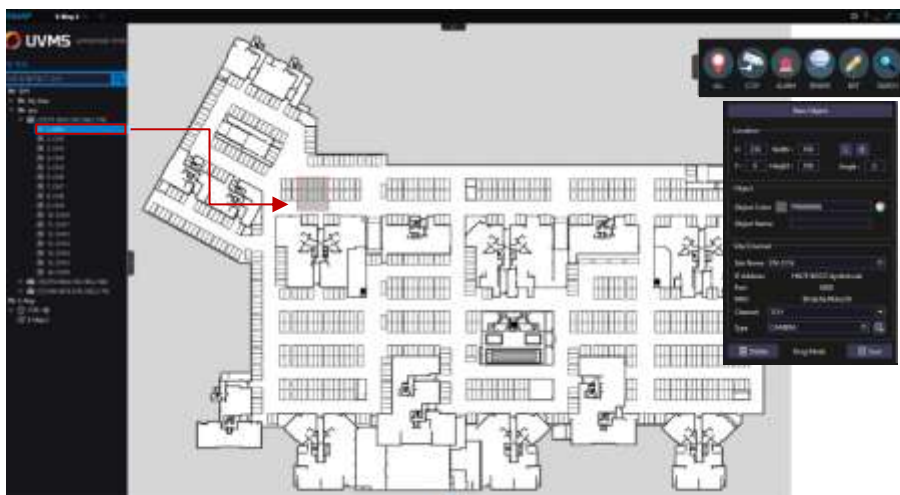


- 1) Addition
 - Click '+' button on the top and add E-Map
 - Image File format should be .PNG or .JPG.
 - Image Size should be in between 4000 X 2827 ~ 4500 X 3180 pixels.
- 2) Open
 - Drag E-Map title and drop on the layout screen.
 - New Tap on the top with the name of the E-Map opened will appear.



- 3) Image Change
 - Right mouse click on the E-Map title and click 'Edit E-MAP list > Image Change E-Map'.
 - Change image with the same way as E-Map Addition.
- 4) Rename
 - Right mouse click on the E-Map title and click 'Edit E-MAP list > Rename E-Map'.
 - Change name and click OK to save.
- 5) Delete
 - Right mouse click on the E-Map title and click 'Edit E-MAP list > Remove E-Map'.
 - Click 'Yes' to delete.

8.5.3. E-Map New Object & Edition



- 1) New Object
 - Channel Drag: Select a channel and drag/drop on the layout
 - Edition: Click 'Edit > New Object' and make an object on a layout by mouse drag. And input information on the Site/Channel for the object and click 'Save'.
- 2) Edit
 - The function for moving the location and changing the information of the object.

- Click 'Edit' icon to go to edit mode.
- Click 'Save' to save the information.

8.5.4. Edit Mode

New Object

Location

X: 291 Width: 47 L R

Y: -89 Height: 73 Angle: 0

Object

Object Color: #969696

Object Name: Elevator

Site/Channel

Site Name: FNR-3004

IP Address: 20.225.137.244

Port: 9010

MAC: 90:da:6a:23:f...

Channel: 1CH

Type: CAMERA

Delete Drag Mode Save

- 1) Location
 - Shows location and size of the object
 - Control Angle by L, R button click or mouse control on the object
- 2) Object
 - Set color or name of the object
- 3) Site/Channel
 - Select site/channel for the object
- 4) Type
 - Set the type of the object and display it as an icon.
 - If an icon is clicked on the upper right panel, only the related object on the layout is shown.
- 5) Delete
 - Delete the object
- 6) Mouse Mode(with right mouse button)
 - Select mode: Select object and see image
 - Drag mode: Control/Move the layout

8.5.5. Edit Mode Function

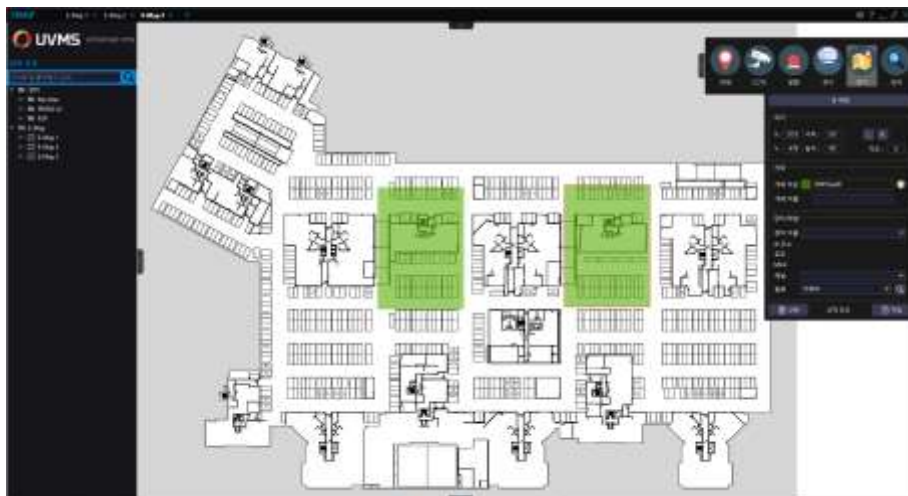


- (1) Object Size Control
 - Adjust size of the object
 - In edit mode, select object and adjust size by mouse drag



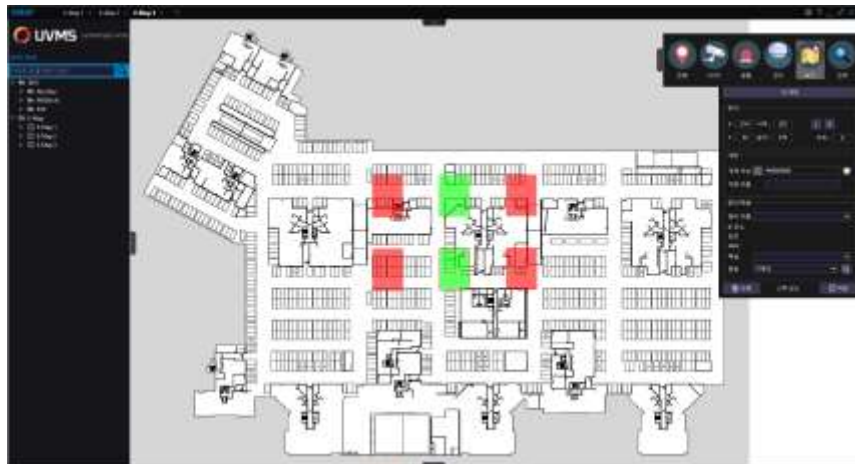
(2) Object Angle Control

- Adjust angle of the object
- Angle can be controlled by the right mouse click on the object.
- Also can be controlled by **L R** button in the panel.



(3) Change location

- Select object with the mouse and move it to the other position



- (4) Multiple Selection and copy
 - Multiple object selection is available with 'Ctrl+click' or mouse drag.
 - A object can be copied with 'Ctrl+C'(copy), 'Ctrl+V'(paste))

8.5.6. View Mode



- 1) Top Menu
 - It shows status of the map
 - Name and the number of Object, CCTV, Alarm & Sensor
- 2) Right Panel
 - Select the type of the object to show on the layout
- 3) E-Map Play
 - When the object is clicked, the live image is shown.
 - With the bottom panel, the recorded image of the object can be playback.

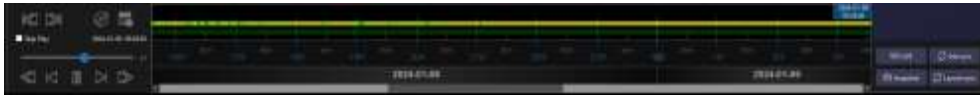
8.5.7. E-Map Search



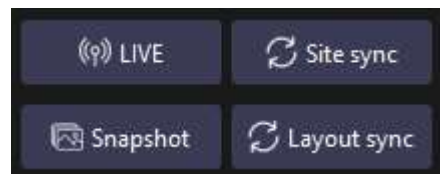
- 1) Search Panel
 - Input keyword to search the related object.
 - Select an object in the searched list to see the location.
- 2) View Location
 - When it is clicked, arrow icon is shown on the layout and user can easily find the location of the object

9. Playback

9.1 Playback Extra Features



- 1) Date / Time
 - Display the date and time on focused video
 - If there is no data in Playback mode, the time and date of live will show
 - 2) Playback Controller
 - x(-64) backward ~ x64 forward playback
 - Control the playback speed by slide bar
 - Go to first data and Go to last data
 - 3) Skip Play
 - If it is selected, playback is done by skipping frame with the selected speed.
 - Change skip play status works after making current playback stop and start.
 - 4) First Data / Last Data Playback
 - Playback of the first data or the last data.
 - 5) File Player
 - Refer to "14.9 File Player".
 - 6) Indicator
 - Default : Show date and time of the currently focused channel
 - 7) Live (Button)
 - Move to current time line(as a live view)
 - 8) Site Sync (Button)
 - On : Sync all channels (Control at the same time)
 - Off : Control only focused channel
- ※ Tip
1. Same time playback of whole channel
: Choose the channel → Playback → Site sync
 2. All channel Live
: Choose the channel → Live → Site sync



- 9) Layout sync
 - Sync all channels based on the focused channel.
- 10) Snapshot
 - Shows preview images for the channel.

11) Calendar



- Date which has recorded data is showed in yellow
- Choose date and time, and click search icon
- Click calendar icon : on/off
- Playback from wanted time
- Choose the date in the Calendar and enter time to go, and click search icon

12) Time table



- By controlling the mouse wheel on the timeline, you can see the recorded data from day unit to second unit
- When you drag mouse, you can move scroll bar
- It will be shown if there is recorded data
- Orange : Continuous
- Green : Alarm, Event
- Red : Panic

13) Two Time Tables



- If there is recorded data, it will be shown on the time table.
- Upper Line : Time table for the current selected channel
- Bottom Line : Whole time table for a group.
- When you choose a specific time, recorded data of that time is played

9.2 Playback Icon



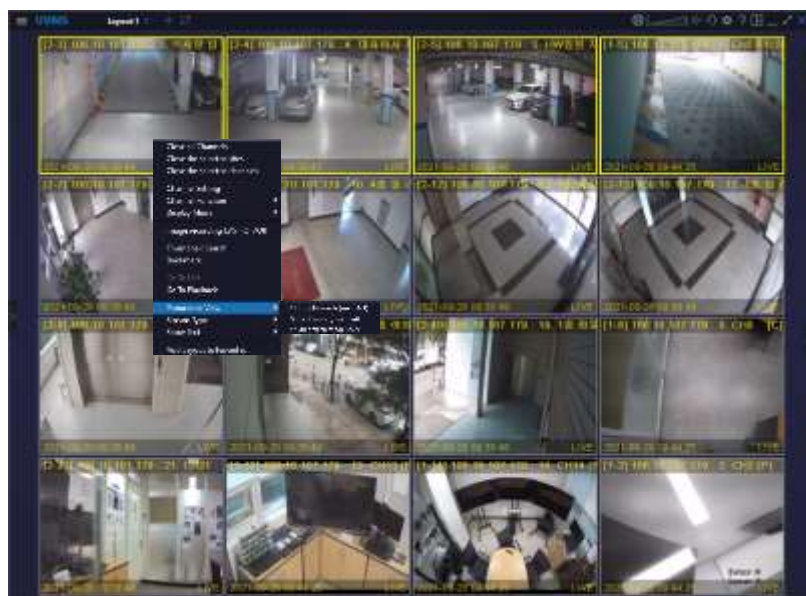
Icon	Name	Description
	Rewind / Fast forward	
	Back frame / Forward frame	
	Pause / Play	
	Skip 10 seconds	Skip the frame by 10 seconds
	Zoom	Click the icon and zoom in/out with mouse dragging Original screen is displayed on bottom right
	Capture	Create UVMS Agent window
	Recording	If click the recording icon, 'Recording' word is displayed on right bottom. If double click the icon, recording data is saved as AVI file

10.1 Panorama






- 1) Time is displayed based on the first selected camera
- 2) Resolution is displayed by combining all cameras
- 3) Horizontal, vertical and quad-screen mode are available
- 4) Panorama add
 - Ctrl+ left mouse button click to choose 4 channels
 - After selecting channels, click the right mouse button and then click 'Panorama View' on the popup menu.

10.2 Panorama Type



- 1) There are 3 types of Panorama: Horizontal/ Vertical/ Quad mode.
- 2) Max. 4 Channel could be selected

Horizontal mode	Vertical mode	Quad-Screen mode
Max. 4x1	Max. 1x4	Max. 4x4
		

11. PTZ

11.1 PTZ



- 1) Go to PTZ mode
 - When you click PTZ icon, the color of icon is changed into blue (Activation)
- 2) PTZ move
 - If you click your mouse to the direction which you want, the arrow will be highlighted
- 3) PTZ speed
 - If you position the mouse for the direction which you want to move and drag the mouse, moving speed is faster and the shape of the arrow will be changed

11.2 PTZ Panel



- 1) Zoom
 - PTZ zoom in/out
- 2) Focus
 - PTZ focus control
- 3) Iris
 - Adjust the quantity of light
- 4) Speed
 - Set PTZ speed (Low, Normal, Fast)
- 5) Preset
 - Choose PTZ preset (Available from 1 to 199)
- 6) Preset Go
 - Go to chosen PTZ preset
- 7) Preset Set
 - After positioning preset, choose preset number and set
- 8) Guard Tour
 - Tour as preset
- 9) Relay
 - R1~R4 : Relay #1~#4
 - + : Relay Start, - : Relay Stop
 - Relay operation is set at the device

12. Right Panel

12.1 Device Status



- 1) Status
 - Show the current status of connected device on UVMS
- 2) Site name
 - Site name, IP and information. If the information is incorrect, it will not be activated.
- 3) Camera
 - Check connection status of camera

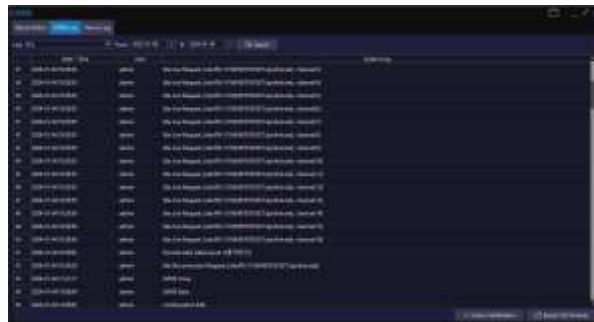
Icon	Description
	Video in
	No video or loss
	Motion in

- 4) Relay
 - Relay Status of connected site

Icon	Description
	Connected relay
	Operating relay

- 5) REC
 - Recording Status of connected site
- 6) Date/Time
 - Date and time of connected site
- 7) HDD
 - Total storage, available storage, HDD temperature

12.2 UVMS Log

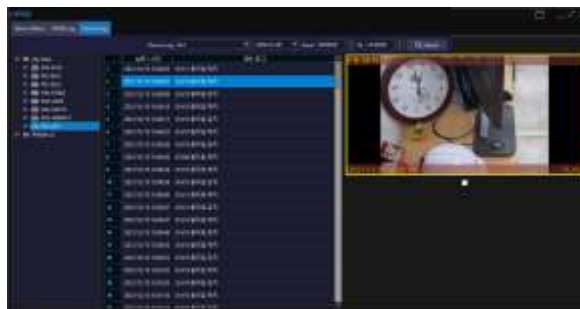


- 1) UVMS log
 - Display UVMS log record
 - Can be searched by user, date and time
- 2) Date/Time
 - Choose date and time to search
- 3) Search
- 4) Display log of chosen date
- 5) Export CSV & hmac
 - Export currently displayed log record as CSV and hmac
- 6) hmac certification



- Verify that CSV and hmac files saved on the computer are original files
- If hmac file is original without modification, certification window is showed up

12.3 Device Log



- 1) Device log
 - Device log search function
 - Snapshot is displayed by double clicking the list, and play record video is available
- 2) Site name
 - Choose the site to search
- 3) Device log
 - Choose the event to search
- 4) Date/Time
 - Choose the date and time to search
- 5) Search
 - Click to search

12.4 Sequence



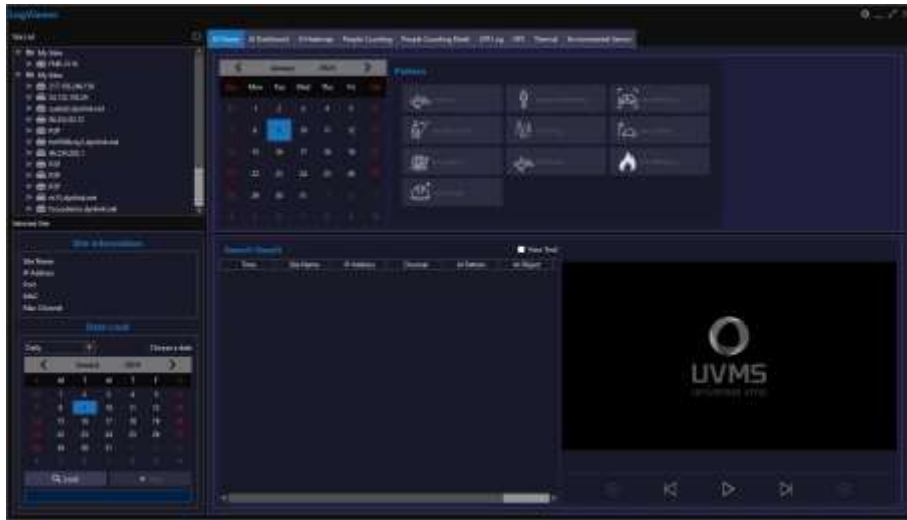
- 1) Layout Sequence
 - It displays the layout tabs at the top in order
- 2) Channel Sequence
 - It displays open channels in the layout with the selected split mode in order
 - The selected split mode must be less than the total number of channels open in the layout
- 3) Sequence Interval
 - It can be set in between 5~3600seconds in 'Configuration > Display > Sequence'

12.5 Full Screen



- 1) Change UVMS into full screen
- 2) In case of full screen mode, channel screen is displayed on screen without panel
- 3) Click ESC button to exit.

13. LogViewer



- Click [Upper Panel > Menu > LogViewer Run] or [Configuration > Network > LogViewer Open] to open.

(* [Configuration > Network > Save Liver Event Data] should be checked to save log.)

13.1 LogViewer – Data Load



1) Site List

- It shows all sites' information connected to the UVMS.
- Refresh button makes the list update.

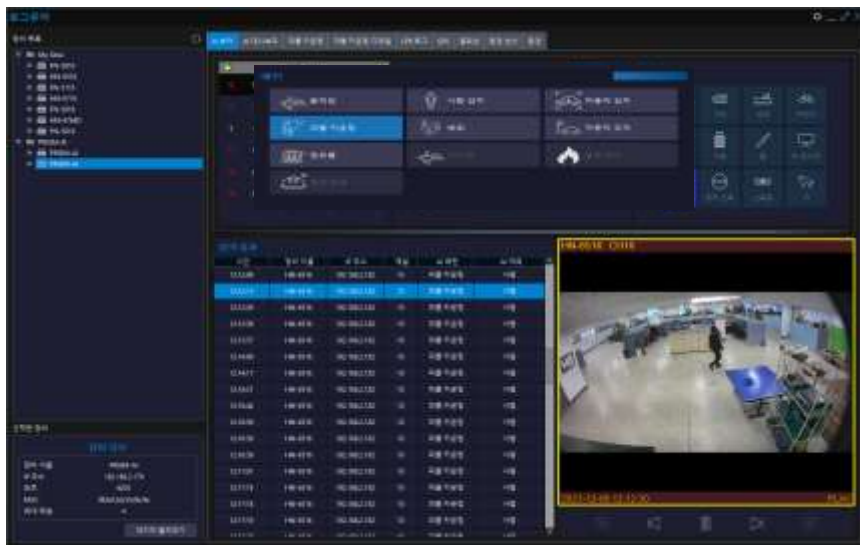
2) Selected Site

- It shows the site name, IP address, Port, Mac, Max. Channel of the selected site.

3) Data Load

- Search by daily / weekly.
- Select date and click Load button to load data.
- Stop button stops data load.
- If data exists on the day of loading, the date is displayed in yellow on the calendar. (* Even if the load is successful, the data color does not change if there is no valid data for that date.)

13.2 LogViewer – AI Viewer



(* AI Viewer can be used only with the PRISM-AI equipment.)

- 1) AI Viewer Setup
 - Select site and date
 - Display pattern or object on that date.
- 2) Search Result
 - Show list of search result
 - Select an event in the list and click to display image
 - Image play control by playback controller on the bottom

13.3 LogViewer – AI Dashboard



(* AI Dashboard can be used only with the PRISM-AI equipment.)



- 1) AI Event Number
 - AI events analyzed in PRISM-AI are displayed in numbers
 - Change the pattern/object to be displayed by selecting event > AI Object Change > Apply



- 2) Date Selection
 - Select date that has data shown in the calendar
 - After selecting date, click magnifier icon to see AI analysis chart
- 3) AI Analysis Chart
 - AI event analysis data is shown as a chart
 - Max. 7 AI event can be registered
 - Change the pattern/object to be displayed by right mouse click > AI Object Add/Edit > Apply

13.4 LogViewer – AI Heatmap



(* AI Dashboard can be used only with the PRISM-AI equipment.)



- 1) AI Heatmap Setup
 - Select site & date.
 - Select pattern and click 'search'. Then, the result will be shown as a list in the bottom box.

- 2) Reset
 - AI Heatmap setup table reset
- 3) Export
 - Export log list as PNG or CSV file format



- 4) Search List
 - AI Heatmap search result is shown
 - Select and click an event in the list to playback the related image.
 - Control image playback by controller on the bottom.
 - Click 'show Heatmap' to show image with heatmap.

13.5 LogViewer – People Counting



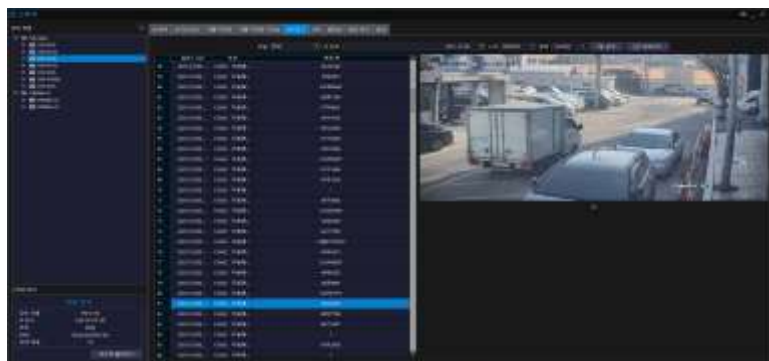
- 1) When there is people counting camera connected, people counting log search is available.
- 2) The number of people entering, leaving, passing and their total number can be easily checked in table and graph.
- 3) Log search can be done on daily, weekly, monthly and yearly basis.
- 4) Export log list as PNG or CSV file format.
- 5) Click 'Reset' to make table reset.

13.6 LogViewer – People Counting Detail



- 1) The number of people entering, leaving, passing and their total number can be easily checked in table and graph per time.
- 2) Log search can be done on daily, weekly, monthly and yearly basis.
- 3) Select the channel to search and set the unit of time to be displayed in the graph. And click 'Search' to show statistics at the bottom.
- 4) Export people counting detail as PNG or CSV file format.
- 5) Click 'Reset' to make table reset.

13.7 LogViewer – LPR Log



- 1) In case of the device that has LPR registration, LPR log search is available
- 2) Searching log record by selecting device and setting time
Log search is also available by inputting specific car number plate
- 3) Playing video is available by clicking play icon on the right bottom of still image
- 4) The registered car number is remained as a log and can be export as CSV file.

13.8 LogViewer – GPS, Thermal, Environmental Sensor



1) GPS

- Click a site and drag it on the layout.
- Search by channel, date and time range selection
- List shows date/time, IP address, Mac address, latitude, longitude and speed.
- GPS log can be exported as CSV file.



2) Thermal

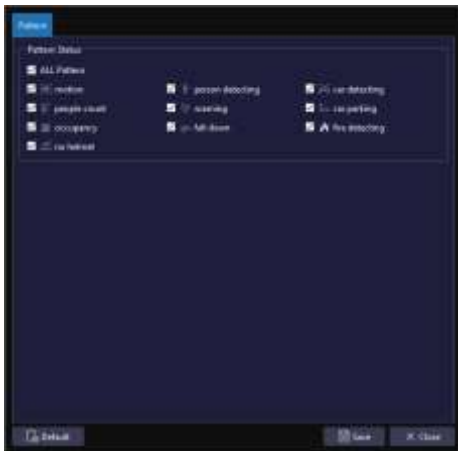
- Click a site and drag it on the layout.
- Search by channel, date and time range selection
- List shows date/time, IP address, channel, Mac address, region, type, status and value.
- Thermal log can be exported as CSV file.



3) Environmental Sensor

- Click a site and drag it on the layout
- Search by channel, date and time range selection
- List shows date/time, IP address, channel, Mac address, Temperature, Tvoc, CO2, PM2.5 and PM10.0.
- Value of the factor that is not applied to the connected sensor will be shown as 0.0.
- Environmental sensor log can be exported as CSV file.

13.9 LogViewer – Configuration



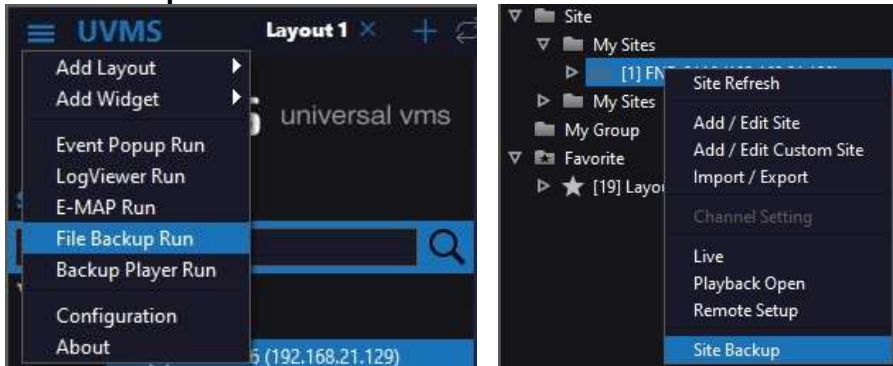
- 1) Default > Save : Apply all pattern
- 2) Select patterns > Save : Apply only for selected patterns

※ Log Viewer Configuration is applied to the following menu.

1. AI Viewer
2. AI Dash board – AI Object change
3. AI Dash board – AI Object Add/Edit

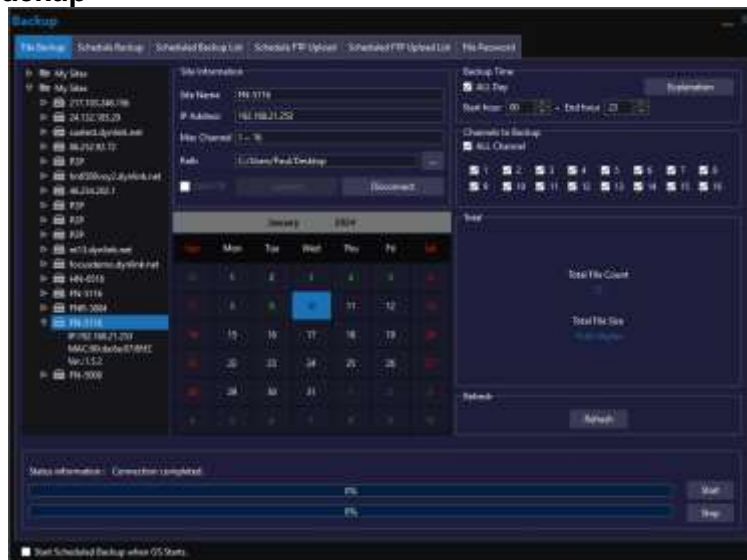
14. Backup

14.1 Go to Backup Mode



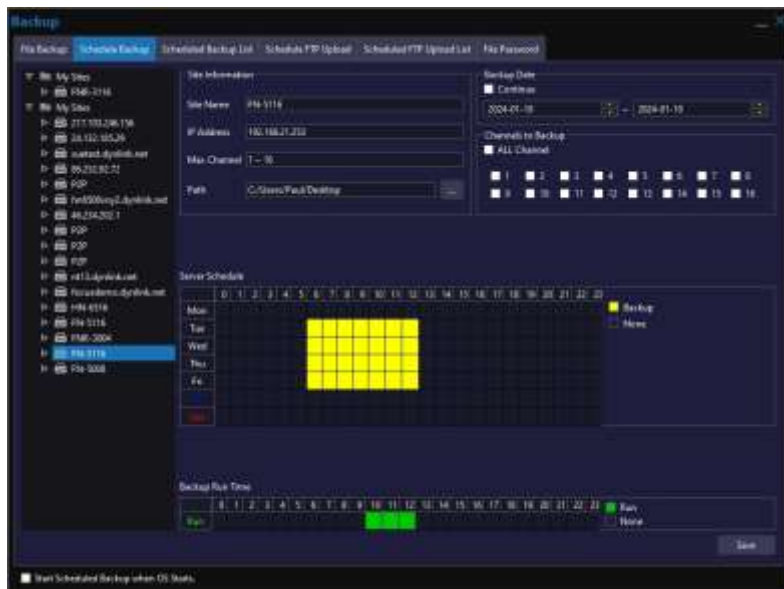
- In UVMS top menu(☰) click 'File Backup Run' or mouse-right on site list and click 'Site Backup' then backup window will open.

14.2 File Backup



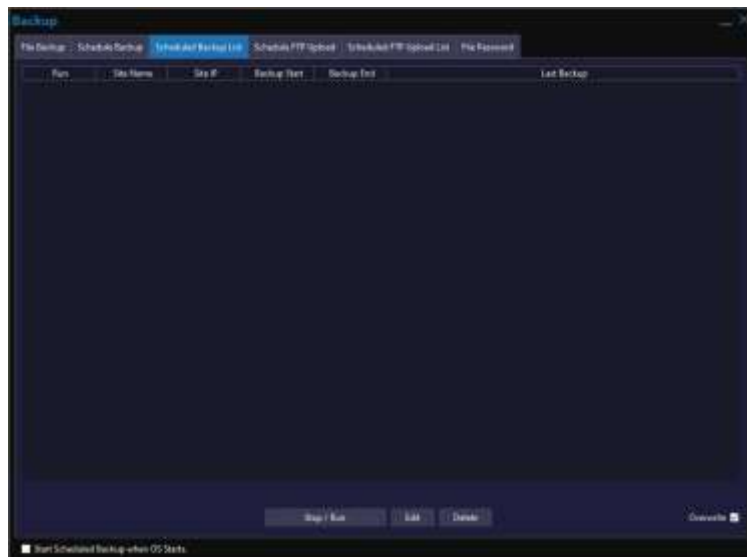
- 1) File Backup
 - Set backup path to save backup file.
- 2) Backup Time
 - Choose the time to backup
 - When 'ALL DAY' is selected, it include whole day (24hours)
- 3) Calendar
 - The data which has recorded data, it shows in green
 - Choose the date to backup
- 4) Total
 - Total file information of File Count and File Size for the currently selected file
- 5) Refresh
 - Refresh all status of file backup
- 6) Status information
 - Once backup starts, it shows status of file download

14.3 Schedule Backup



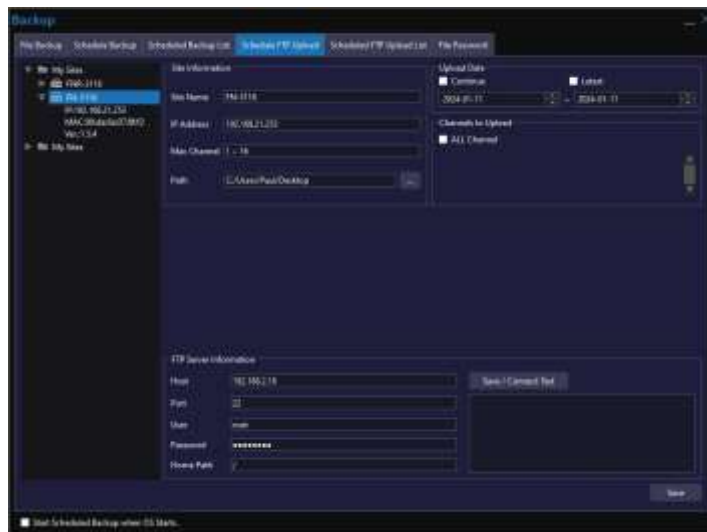
- 1) Site List
 - Site list registered on UVMS
- 2) Site Information
 - Display information of current site
 - Path can be changed
- 3) Backup Date
 - Choose the date to backup
 - If you check 'Continue', you can designate from backup start date to present
- 4) Channels to Backup
 - ALL Channel : Select all channels
 - Choose the channel to backup
- 5) Server Schedule Setting
 - Set date and time to backup
 - Backup section is set by dragging or clicking, and then it is displayed in yellow
- 6) Backup Runtime
 - Set backup progressing time
 - Backup runtime is set by dragging or clicking, and then it is displayed in green
 - In schedule backup mode, set a backup time of PC
(*PC has to be turned on during runtime)
- 7) 'Save' Button
 - After set up backup setting and click 'Save' button, data is saved on 'Schedule Backup List' tab
 - Backup starts as soon as click 'Save'
- 8) Start Schedule Backup with OS
 - Auto start on/off when OS start

14.4 Schedule Backup List



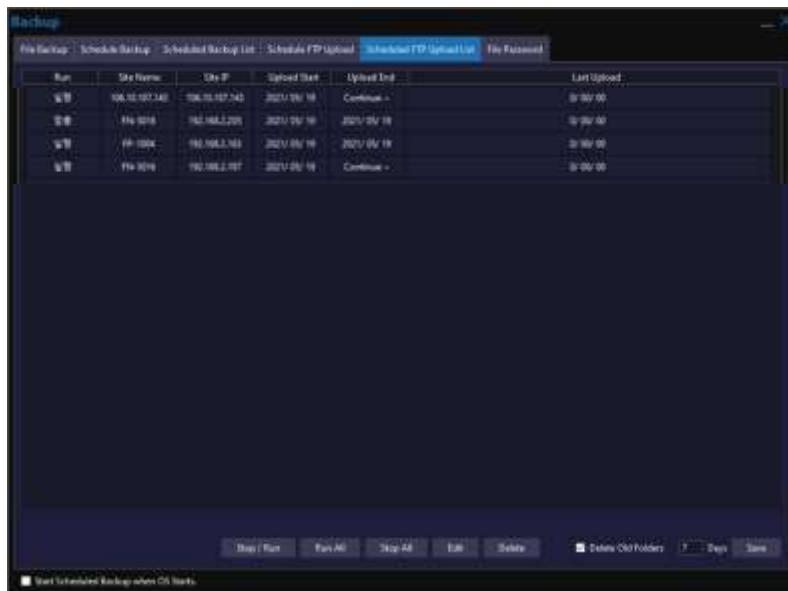
- 1) Schedule Backup List
 - It shows schedule backup list which is saved on device
 - When schedule backup is set up, user can check status of device backup list
 - When the list is double clicked, saving path is opened
- 2) Backup Stop/Run
 - Shows current operation status of backup
 - Set start/stop with the button
- 3) Edit
 - Schedule Edit
- 4) Delete
 - Delete selected list
- 5) Overwrite
 - Backup overwrite On/Off

14.5 Schedule FTP Upload



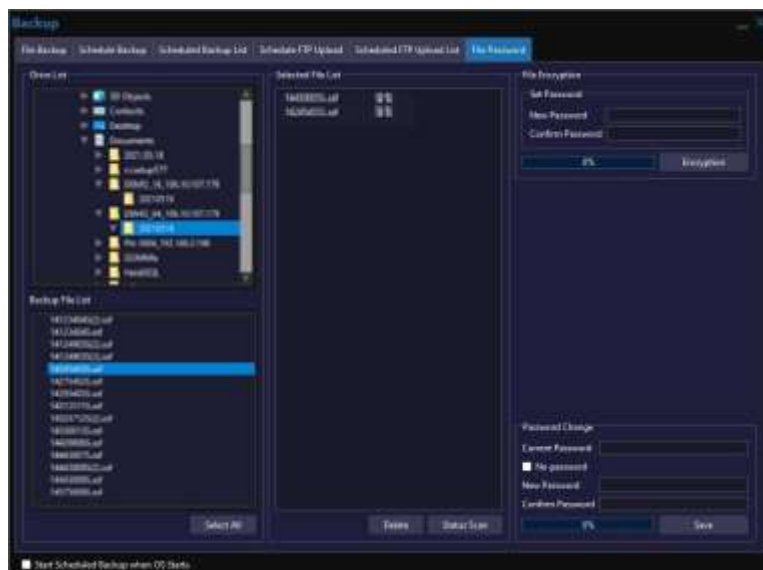
- 1) Scheduled FTP upload function is supported for stable backup for multiple sites.
 - ※ Caution) To use the schedule FTP upload function, the FTP server must be operated on the backup PC
 - 2) Site Information
 - Display information of current site
 - Path can be changed
 - 3) Upload Date
 - Choose the date to upload
 - If you check 'Continue', you can designate from backup start date to present
 - If you check 'Latest', it starts from the previous day and proceeds like continuous backup
 - 4) Channels to Upload
 - ALL Channel : Select all channels
 - Choose the channel to backup
 - 5) FTP Server Information
 - Host : Enter Backup server IP Address
 - Port: Default port is 22, If it is limited, enter another number
 - User : FTP server ID
 - Password : FTP server Password
 - Home Path : Home path set in FTP
- ※ After entering all the information, user should check the connection status with the FTP server by performing Save / Connect Test

14.6 Schedule FTP Upload List



- 1) The last downloaded file is displayed, not the time of the last data uploaded
- 2) Auto Delete
 - Delete the data which is older than a set number of days (Default is 7 days, Can be set up to 180 days)
 - Basically, 5% of free HDD space is reserved
 - Even if the data is within the set number of days, if the storage space is insufficient, data with the old recording time are deleted.
 - After change the days, click "Save" to apply.

14.7 File Password



- 1) Backup File List
 - Display a list of backed up files
- 2) Select File List
 - If you select a file to encrypt, it appears in the list
 - 'Status Scan' shows the status of the current files(Open or Encrypted)
 - 'Delete' to delete selected list.
- 3) File Encryption
 - Set up the password in backup file saved in PC (*Multi-files are available)
- 4) Password Change
 - Delete or change the password

14.8 Streaming Backup



- 1) Streaming Backup
 - If both start and end time is set, streaming backup menu is showed up automatically
- 2) Backup Set
 - Set 'Start indicator' and 'End Indicator' where the mouse is currently located
 - Date and time is automatically input on backup dialog
 - Or designate range with dragging right mouse button (*Recommend for short time backup)
- 3) Backup Clear
 - Initialize backup setting
- 4) Device Information
 - Display information of current device
 - Set the save path
- 5) Backup setting
 - User can choose channel to backup and setup date and time, manually
 - When date and time is changed, start and end indicator is moved accordingly

- 6) Backup File Setting
 - Select the format of the backup file.

14.9 File Player



1) File Player

- File Drive List is shown when clicking file play icon on bottom panel (On/Off)

2) File Drive List

- Choose the file to play
- If you choose the file, TTX file is created. And then you can play the file through UVMS by double clicking the file

3) Create Timetable

- Change SSF file into TTX file to use on UVMS

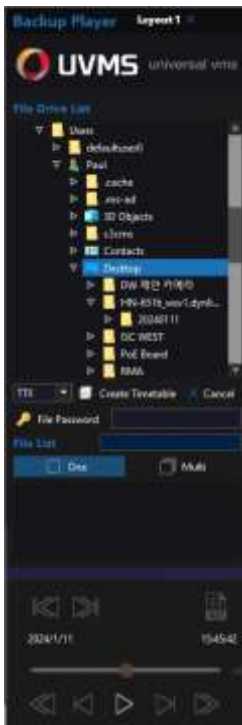
4) File Password

- If the file has a password, click 'File Password' and input the password.

5) One/Multi

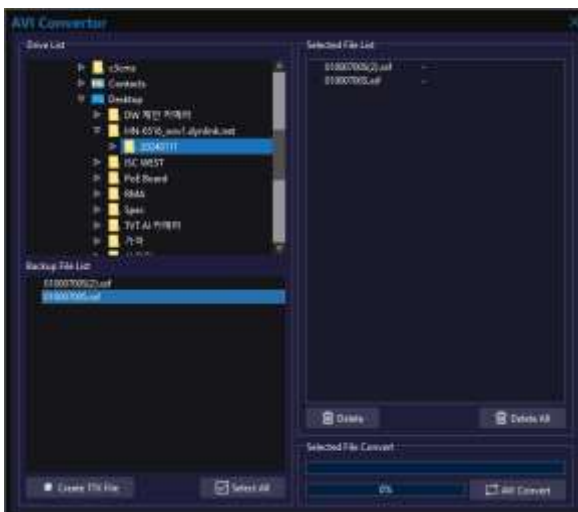
- Choose play single channel or multiple channels by selection of One or Multi.

14.10 Backup Player & AVI Converter



1) Backup Player

- Open Backup Player in the menu(Configuration > Application > Tools > Backup Player) or select 'Backup Player Run' in the top menu.





2) Backup Player – AVI Converter

- It makes ssf file format to avi file format
- Backup File List : Backup file list is shown when the folder in the Drive List is selected.
- Selected File List : Select file in the Backup File List and double click to send to the Selected File List. (To delete, select file and click 'Delete' button)
- Selected File Convert : click 'AVI Convert' to convert selected files.

15. Screen / Video Recording

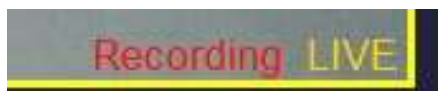
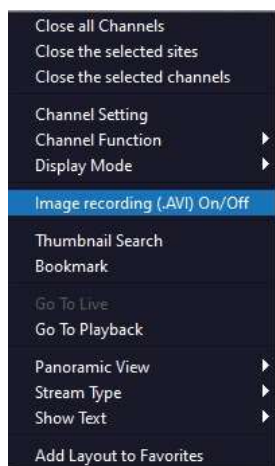
15.1 Screen Recording

User can record screen with screen recording button. And when user click 'screen recording' button one more time, user can set file path of screen recording file.

	
Screen Recording Inactivate	Screen Recording Activate

15.2 Video Recording

User can record selected channel's video as AVI file. If the recording is activated, 'Recording' mark is displayed on the bottom of screen.

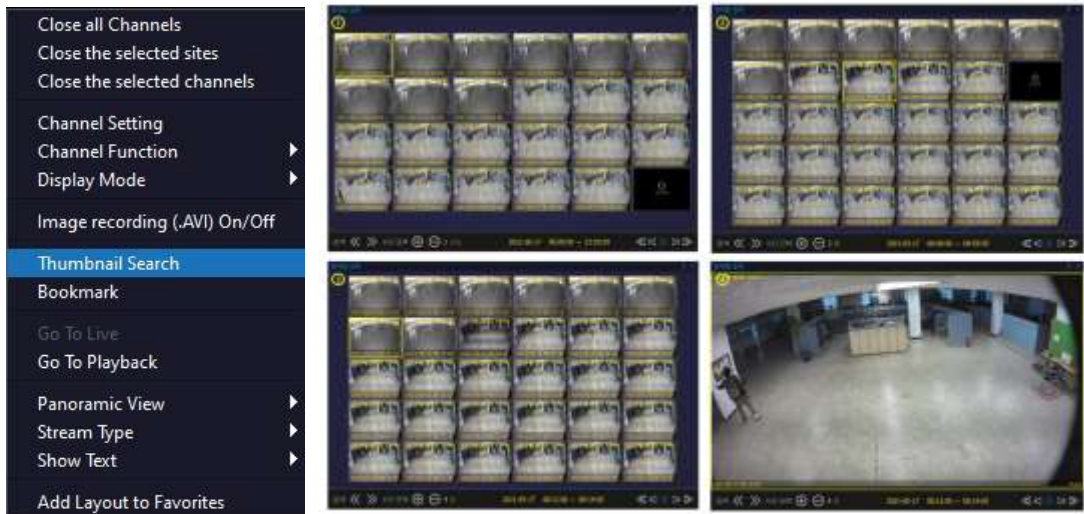


And if one more click 'Image recording (.AVI) On/Off', video recording is completed.



16. Thumbnail Search

User can search recorded video at split screen mode by hour or 2minute units or 4 second units.



17. Configuration

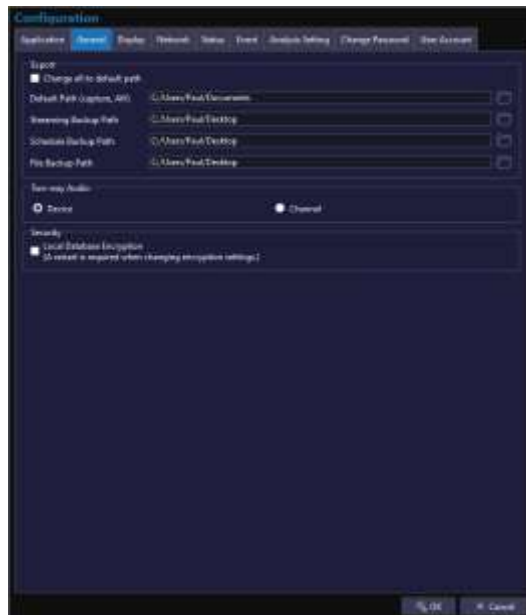
17.1 Application



- 1) Skin
 - Setup UVMS skin type
 - 4 Types : Gray-Orange, Blue-Sky, Black-Red and Navy-Sky
- 2) Language
 - Setup UVMS language
 - 5 Languages : English, Korean, Traditional Chinese, Italian and Japanese
 - Language change for detail process such as file backup, log viewer, event pop-up is applied after restarting UVMS.
- 3) Display
 - Setup display according to the specification.
 - 2 Types : Basic Display(recommended by the operating system), High Quality Display(recommended if there is an external graphic card installed)
- 4) Free resizing of display
 - On : Even if there is no space between channels, the size of the channels can be changed freely.
 - Off : If there is no space between channels, the size of the channels will not change.
- 5) Hardware accelerated decoding
 - Use software decoding(compatibility) : decoding by software
 - Enable hardware accelerated decoding : decoding by hardware accelerated of GPU(Graphic Card) – display playback speed is improved
- 6) Auto
 - Auto Login: Start UVMS without log-in.
 - Auto Close: Close UVMS without pop-up screen
- 7) Display last connection view

- On : Display the last connected layout screen, when the UVMS starts.
 - Off : Display empty layout, when the UVMS starts.
- 8) Version Update Alarm
- On : Notify if there is update version.
 - Off : Do not notify even if there is update version.
- 9) Tools
- Open 'Backup Player'
 - Backup Player Export
 - Open 'Masking Tool'

17.2 General



- 1) Export
 - Designate default path and backup path
- 2) Two-way Audio
 - Device: Two-way audio for all devices
 - Channel: Two-way audio for only the focused channel
- 3) Security
 - Database Encryption

17.3 Display



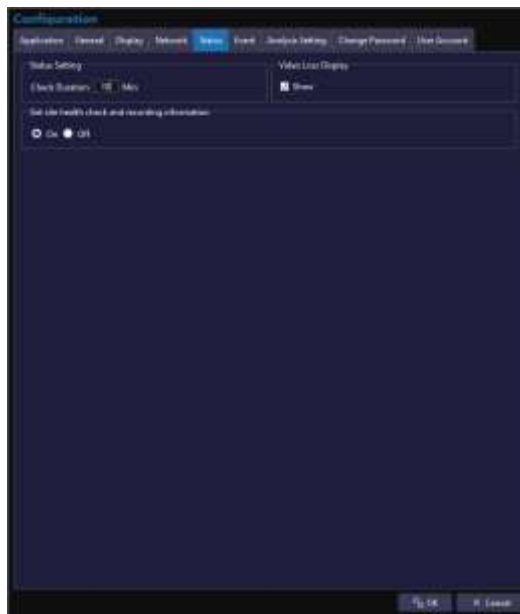
- 1) Default Screen Ratio
 - Setup basic ration of the channel
 - There are 3 types of ratio → Native, 4:3, 16:9
- 2) Default Stream Type
 - Setup basic stream
 - There are 3 types of stream type → Auto, 1st Stream, 2nd Stream
- 3) Fill the Screen
 - Fill the Screen (On/Off)
- 4) Space
 - Adjust channel space to fit channel
 - After change, double click on an empty space of the layout to refresh.
- 5) Select Size
 - Adjust title font size of channel
 - Adjust icon size
- 6) Date/Time Format
 - There are 2 types of date/time format : YYYY-MM-DD, MM-DD-YYYY
 - Time format: (*Currently disabled)
- 7) Sequence
 - Set sequence time interval(5~3600[sec])
- 8) Display Text
 - Select information text displayed in the channel
- 9) Display Text Color
 - Select font color

17.4 Network



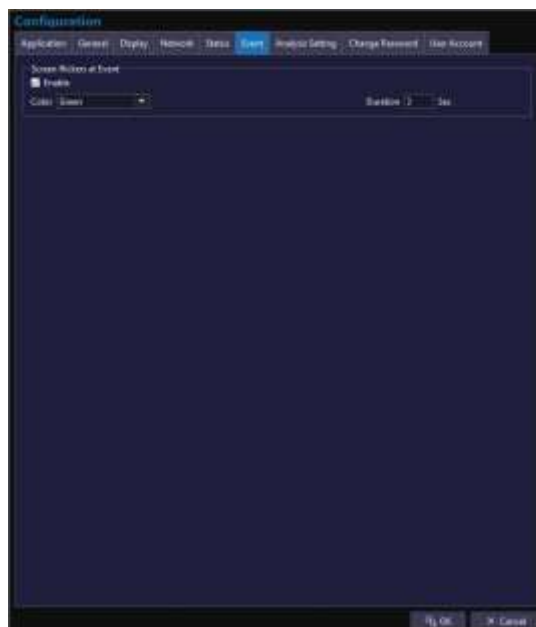
- 1) Reconnect
 - Setup the time for retrying connection
- 2) Live Storage
 - Save live image as SSF file.
 - Save path can be set.
 - Choose whether to save I-frame or full frame.
- 3) Live Event Data
 - Choose whether to save live event data(GPS, Thermal, Environmental Sensor) to DB.
 - Saved live event data can be searched with LogViewer.

17.5 Status



- 1) Status Setting
 - Set check duration time for status setting
- 2) Video loss display
 - If there is a video loss, the screen can be set to display "video loss" (On/Off)
- 3) Get health check and recording information
 - Choose On/Off.

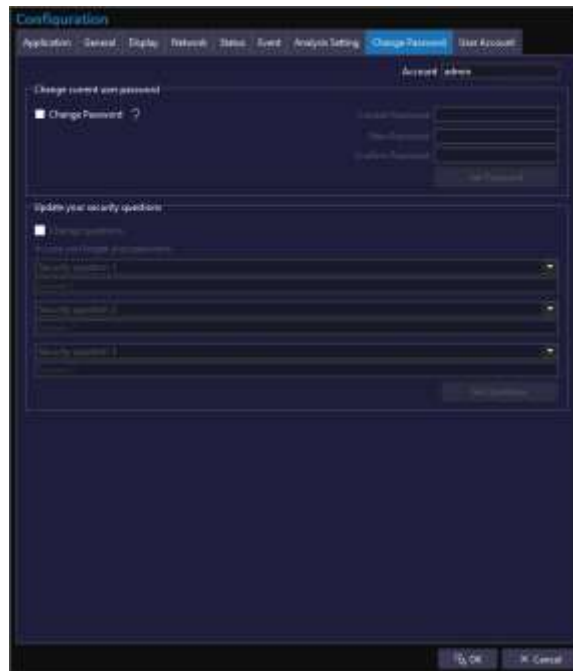
17.6 Event



- 1) Screen flickers at Event

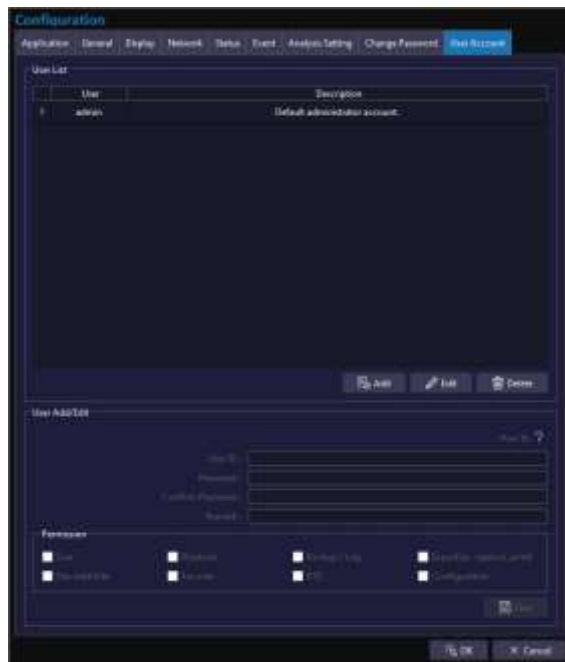
- Setting the alarm color displayed on the channel when an event occurs
- Set duration screen flicker

17.7 Change Password



- 1) Change current user password
 - When login with the initial administrator account password, it recommends changing password.
 - Change password is for change the currently logged in password
 - It is for both administrator and user.
- 2) Change Password
 - Click to change
 - Current Password : input current password
 - New Password : input new password to change
 - Confirm Password : confirm the new password
 - Set Password : Save new password
- 3) Update your security questions
- 4) If the log in is failed due to the incorrect password, the password can be reset after authenticating the security question.
- 5) Set Questions
 - Save the questions for authentication

17.8 User Account



- 1) User account management
 - Only 'admin' account can access to user account management
- 2) User list
 - Current user list and description
- 3) User add/edit
 - Add or edit user account
- 4) User delete
 - Delete user account
- 5) Permission
 - Setup the permission of each user account

Thank you!