

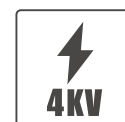
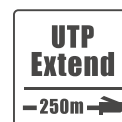
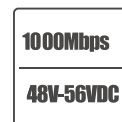
### VT-G24POES

#### 27-Port Full Gigabit AI PoE Fiber Switch



### FEATURE

- 24\*10/100/1000Base-T PoE Ports (Data/Power)
- 2\*10/100/1000Base-T Uplink RJ45 Ports (Data)
- 1\*1000Base-X Uplink SFP fiber Port (Data)
- Up to 250 Meter transmission at “Extend” model
- Lightning protection: 4KV 8/20us; Protection level: IP30
- AI Watchdog Function
- Total PoE Budget: 250 Watts
- Bandwidth: 54 Gbps(No Block)
- Operation: Plug and Play, no any settings needed



### SPECIFICATIONS

Model	VT-G24POES
<b>Interface Characteristics</b>	
Fixed Port	24*10/100/1000Base-T PoE Ports (Data/Power) 2*10/100/1000Base-T Uplink RJ45 Ports (Data) 1*1000Base-X Uplink SFP fiber Port (Data)
Ethernet Port	Port 1-26 can support 100/1000Base-T(X) auto-sensing, Full/ Half duplex MDI/ MDI-X self-adaption
Twisted Pair Transmission	10B pE-TW atP, ,R rTP (≤100 eters) 100BASE-TX: Cat5 or later UTP (≤100 meters) 1000BASE-T: Cat5e or later UTP (≤100 meters)
Optical Fiber Port	Gigabit optical fiber port, default no include optical module (Optional Single-mode/ Multi-mode, Single fiber/ Dual fiber Optical Module. LC)
Optical Cable/ Distance	Multi-mode: 850nm/ 0-550m Single-mode: 1310nm/ 0-40km, 1550nm/ 0-120km
Functional Switch	250m: long-distance function (Default off, Use:on), After opening, Port 17-24 Support 10M/250m transmission and PoE Watchdog function
<b>Chip Parameter</b>	
Network Protocol	IEEE802.3 10BASE-T, IEEE802.3i 10Base-T, IEEE802.3u 100Base-TX IEEE802.3ab 1000Base-T, IEEE802.3z 1000Base-X, IEEE802.3x
Forwarding Mode	Store and Forward(Full Wire Speed)
Switching Capacity	54Gbps (Non-blocking)
Forwarding Rate@64byte	40.18Mpps
MAC	8K
Buffer Memory	4M
Jumbo Frame	9.2K
LED Indicator	Power: PWR (Green), Network: Link (Green) PoE: PoE (Red), Functional switch: 100m/250m (Green)
<b>PoE &amp; Power Supply</b>	
PoE Port	Port 1-24
Power Supply Pin	1/2(+) 3/6(-)
Max Power Per Port	30W, PoE+
Total Power	250 Watts (PoE Ports 1~24)
Power Consumption	Standby <5W, Full load <250W
Power Supply	Built-in power supply, AC100~240V50-60Hz, 4.1A

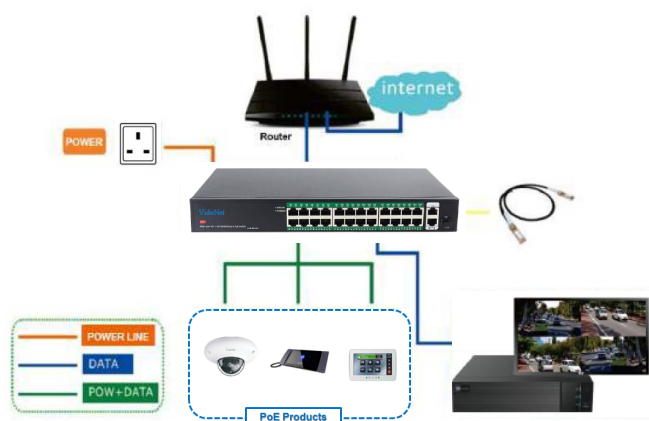
### SPECIFICATIONS

Physical Parameter	
Operation TEMP/Humidity	-20~+55Â°C, 5%~90% RH Non condensing
Storage TEMP/ Humidity	-40~+80°C, 5%~95% RH Non condensing
Dimension (L*W*H)	350*215*44mm
Net /Gross Weight	2.0kg / 2.5kg
Installation	Desktop, Rack mounted
Certification	
Lightning Protection	Lightning protection: 4KV 8/20us, Protection level: 1P30
Certification	CCC, CE mark, commercial, CE/LVD EN62368-1, FCC Part 15 Class B, RoHS

### INDICATOR STATUS

Indicator	Indicator Description	Color	Work status	Description
Power	Power indicator	Red	Solid	Power is normal
			Off	No power, the power switch is not turned on, power supply is abnormal
PoE	PoE Power indicator	Yellow	Solid	The corresponding R45 port is connected to the powered device and the power supply is normal
			Off	The corresponding R45 port is connected to the powered device and the power supply is abnormal
Link/Act	Connection indicator	Green	Blinking	A valid link is established
			Off	An valid link is established

### APPLICATION



### DIMENSION

