

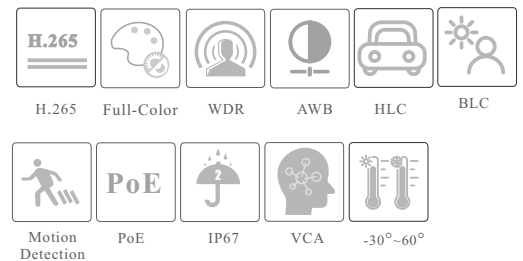


VTC-E40FC

4MP Full-Color Turret Network Camera



- H.265+ / H.265 / H.264 +/H.264 / MJPEG coding
- Max. resolution: 2688 × 1520
- 20~ 30m white light view distance
- 24/7 full color imaging
- 3D DNR, WDR, HLC, BLC, and ROI coding
- Support electronic image stabilization
- Support image distortion correction
- Support 1CH audio input; 1 CH built-in MIC
- Built-in micro SD card slot; up to 512GB
- DC12V/PoE power supply
- IP 67 ingress protection
- Support three streams
- Support remote monitoring by smart phones & tablet PCs with iOS and Android OS
- Multiple smart events can be enabled at the same time
- Support P2P function
- Support dual-system backup



SPECIFICATIONS

Specifications	Model	VTC-E40FC		
Camera				
Image Sensor		1 / 2.9 "CMOS		
Image Size		2688 × 1520		
Electronic Shutter		Auto or manual mode; manual mode: 1 / 3s ~ 1 / 100000 s		
Iris Type		Fixed Iris		
Min. Illumination		0.0005 lux @F1.0, AGC ON; 0 lux with illumination on		
S/N Ratio		≥50dB		
Lens		2.8 mm@F1.0, H.FoV: 99°; V.FoV: 53°; D.FoV: 119° 3.6 mm@F1.0, H.FoV: 81°; V.FoV: 44°; D.FoV: 96°		
Focus		Fixed		
Lens Mount		M12		
Wide Dynamic Range		120dB		
BLC		Yes		
HLC		Yes		
Defog		Yes		
Digital NR		3D DNR		
EIS		Yes		
Angle Adjustment		Pan: 0°~360°; Tilt: 0°~75°; Rotation: 0°~360°		
Image				
Video Compression		Main stream: H.265+/ H.265 / H.264+ / H.264 Sub stream/Third stream: H.265+/ H.265 / H.264+ / H.264/ MJPEG		
H.264 Compression Standard		Baseline Profile/Main Profile/High Profile		
Resolution		4MP (2688×1520), 2K (2560×1440), 1080P (1920×1080), 720P (1280×720), D1, VGA (640 × 480), 640 × 360, CIF, 480×240		
Main Stream		4MP/2K/1080P(60Hz : 1 ~ 30fps; 50Hz: 1~25fps)		
Sub Stream		720P/D1/640 × 360/VGA/CIF/480×240 (60Hz : 1 ~ 30fps; 50Hz: 1~25fps)		
Third Stream		720P/D1/640 × 360/VGA/CIF/480×240 (60Hz : 1 ~ 30fps; 50Hz: 1~25fps)		
Bit Rate		32 Kbps ~ 8 Mbps		
Bit Rate Type		VBR / CBR		
Audio Compression		G711A / U		
Image Settings		ROI, Saturation, Brightness, Hue, Contrast, Wide Dynamic, Sharpness, Image Flip, Image Mirror, NR, etc. adjustable through client software or web browser		
ROI		Each ROI to be configured separately		
Interfaces				
Network		RJ 45 (10/100 Base-T)		
Video Output		No		
Audio		1CH audio input; 1CH built-in microphone		
Storage		Built-in micro SD card slot; up to 512GB		
Reset		Yes		
Alarm		No		
Intelligent Analytics				
Smart Event		Line crossing, region intrusion/entrance/exiting (human/vehicle classification), abandoned/ missing object detection		
Statistics		Target counting by line (human/vehicle classification)		
Exception Detection		Scene change, video blur and abnormal color detection, audio exception		
Face Detection		Face detection, face capture		
DORI Distance				
Lens	Detect	Observe	Recognize	Identify
2.8mm	61m(200ft)	24m(80ft)	12m(40ft)	6m(20ft)
3.6mm	75m(247ft)	30m(99ft)	15m(49ft)	8m(25ft)
Functions				
Remote Monitoring		Web Client/NVR/NVMS/mobile APP		
Web Browser		Chrome 92.0+/Edge 92.0+/Firefox 91.0+/Safari 13.1+		
Online Connection		Support simultaneous monitoring for up to 10 users; Support multi-stream real time transmission		
Network Protocol		UDP, IPv4, IPv6, DHCP, NTP, RTSP, RTP, RTCP, RTMP, FTP, PPPoE, DDNS, SMTP, SNMP, HTTP, 802.1x, UPnP, HTTPS, HTTP POST, P2P, QoS		

Interface Protocol	ONVIF
API & SDK	Yes
Storage	Network remote storage; micro SD card storage
Smart Alarm	Motion detection, SMD, SD card error, SD card full, IP address conflict, Network disconnection
General Function	Watermark, video mask, heartbeat, image distortion correction, corridor pattern, ANR, cloud upgrade, disarming
Security	Video encryption, firmware encryption, HTTPS encryption, configuration encryption, illegal login lock, IP address filtering, 802.1x authentication, basic and token authentication for HTTP/RTSP
PoE	Yes , IEEE802.3af
White Light Range	20 ~ 30 m
Ingress Protection	IP 67
Others	
Power Supply	DC12V/PoE
Power Consumption	< 7W
Storage Conditions	- 30 °C ~ 65°C (-22°F~149°F), Humidity: less than 95 % (non-condensing)
Operating Conditions	- 30 °C ~ 60 °C (-22°F~140°F), Humidity: less than 95 % (non-condensing)
Dimensions (mm)	Ø 108 × 95.8
Weight (net)	Approx. 0.456KG
Installation	Ceiling mounting; Wall mounting
Certificate	CE, FCC
Environmental Protection	Directive EU RoHS, WEEE(2012/19/EU) , directive 94/62/EC and REACH(EC1907/2006)

AVAILABLE ACCESSORIES



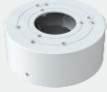
AVAILABLE MODEL

Available Model	VTC-E40FC
-----------------	-----------

AVAILABLE ACCESSORIES



VTC-YXH0301



VTC-YXH0104



VTC-YZJ0203



VTC-YZJ0213



VTC-YXH0301+
VTC-YZJ0810



VCT-YXH0301+
VTC-YZJ0406+VTC-YZJ0501



VTC-YXH0301+
VTC-YZJ0406+VTC-YZJ0601



VTC-YZJ0213+
VTC-YZJ0501



VCT-YZJ0213+
VTC-YZJ0601