

DI-X10

MASTER DOOR CONTROLLER

LAN | OSDP

WIFI VERSION

DI-X10-WIFI

STANDARD VERSION

DI-X10

HIGH CAPACITY VERSION

DI-X10-HC

CE CERTIFICATION

EN-60839-11

EN-50131-1

EN-50133-1

DESCRIPTION

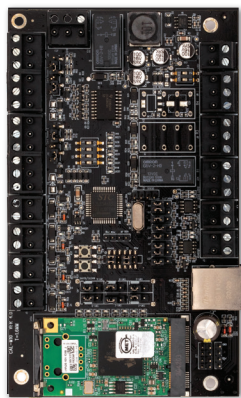
The DiSS Master Door Controller (DI-X10) is a smart, standalone controller designed for advanced access control, door management, and time & attendance functions. Ideal for installation in secured rooms, it ensures reliable performance even in independent operation.

Whether managing a single door with a basic reader or a complex eight-door system with interlocking mechanism, dual readers, and personnel isolation, the Master Door Controller (DI-X10) delivers seamless control.

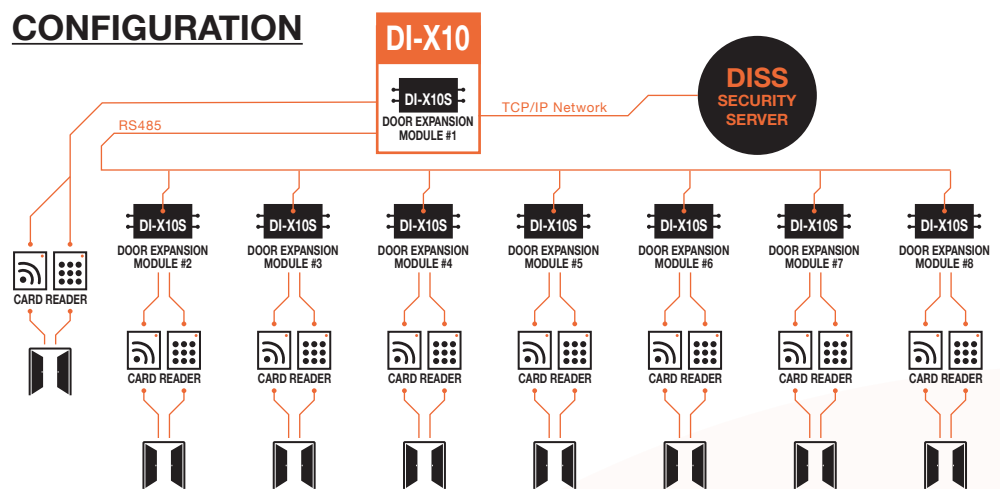
It also communicates all access events and anomalies to a central system, facilitating real-time logging and alarm activation for robust access control.

Moreover, the Master Door Controller (DI-X10) supports fully programmable routines, enabling tailored automation and specialized functions that run independently within the controller.

CONFIGURATION



89mm X 149mm X 25mm



FUNCTIONALITY

- Intelligent Device without degraded in offline operation, even in the event of communication failure with server
- 2,000,000 users, 2,000,000 Transactions (DI-X10-HC high Capacity)
- Embedded Ethernet 10/100base-T port provides up to 8 times greater throughput than serial-to-Ethernet converters.
- Support OSDP Protocol bidirectional communication (Reader Fault Detection)
- Support 36,000 users, 250,000 Transactions (DI-X10 Standard/ WIFI)
- Act as Single Door Controller + Event Server all in one design
- Can config from 1 door, 2 doors and up to 8 doors configuration
- 255 Holiday Periods Setting
- Enhanced anti-pass back capabilities
- Enhanced interlock capabilities
- Replaceable lithium backup battery
- Fast start time < 1s
- Real Time Clock
- Unlimited Door Group Setting
- 128 Time Zones Setting

READER INTERFACE

- 4 Input Support : 1 x Door Sensor , 1 x Release Input, 2 x Aux Alarm Input with EOL (4 states supervision door contact —open, close, short, cut off) support
- 2 Output Support: 1 x Door Lock and 1 x Aux Alarm Output (Programmable)
- Support 4 x Readers (2 x OSDP readers or keypad + 2 x Wiegand Reader in IN and OUT Reader with both configuration)
- Auto Sync Server Time
- With RS232 Diagnostic port for real time system maintenance
- Support Customized card format - 24 bits to 64 bits
- Support Octopus Reader

SPECIFICATIONS

- Door Configuration : 1 DI-X10 + 7 DI-X10S
- Setup Configuration : Dip -Switch
- Operation Temperature : 0°C to 45°C
- Humidity : 0% - 95% RH
- Connection Support : RS-485 2-wire
- Power Supply : 12VDC, 150mA Max
- PCB Board Size : 149 x 89 x 25 mm