

DI-AX2000

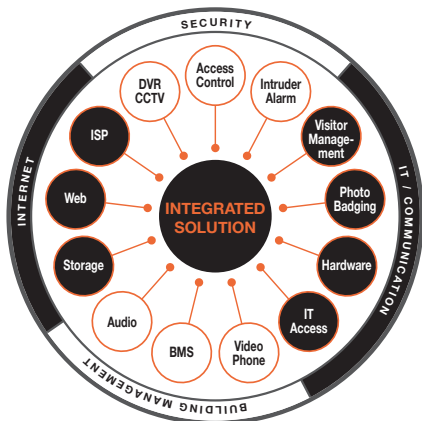
ACCESS CONTROL & ALARM MONITORING MANAGER

OSDP

One-Stop Platform Version
DI-AX2000

Permit Control System Version
DI-AX2000-PCS

Small / Medium Business Version
DI-AX2000-PRO / DI-AX2000-SMB



DESCRIPTION

DiSS Access Control & Alarm Monitoring Manager (DI-AX2000) is a scalable, single-platform Security Management solution engineered to centralize and integrate multiple electronic security, video surveillance, environmental, and operational systems. Designed for facilities of any scale, it provides a unified control interface for enhanced security and operational efficiency.

- Digital Video Recording (DVR), Network Video Recording (NVR), IP CAM and CCTV monitoring Integration
- Portable device integration for Record taking or offline data download/ upload
- Vehicle and Car Park Management
- Fully integrated Access Control
- Visitor Management Integration
- Guard Tours Integration
- Facility Booking Integration
- Intercom System Integration
- Mustering
- Elevator Control and Elevator Car Destination Control System (DCS) Integration
- Security Alarm Monitoring (Alarm Event Display)
- Rolling transaction display
- VMS Integration
- Photo ID Badging Integration
- Zone monitoring
- Time zones and Holidays

SYSTEM DESCRIPTION

Access Control & Alarm Monitoring Manager (DI-AX2000) delivers real-time event reporting with detailed incident data and operator instructions. It supports a broad range of hardware and software products, utilizing industrial-standard interfaces such as MODBUS, OPC, BACNET, API, and SDK for seamless IBMS and IT integration. Real-time data exchange is facilitated through ODBC, enabling interoperability with subsystems including Access Control, Intruder Alarm, Digital Video Recording, CCTV Monitoring, Facility Booking, POS Ordering, Car Park Management, Lift Car Management, Visitor Management, Photo Badging, Guard Tour System, Lighting Control, and HVAC.

SYSTEM FEATURES

Access Control & Alarm Monitoring Manager (DI-AX2000) employs a client-server architecture, ensuring robust system performance and scalability. Operators interact with the system via graphical menus, real-time displays and dynamic screens. Intuitive navigation, using point-and-click commands, hierarchical tree views and colour-coded alerts, enables rapid identification of critical conditions. Administrative tasks are streamlined through context-sensitive drop-down fields and pre-populated templates.

- Seamless integration with External Systems; CCTV, DVR, NVR, IP CAM, Videophone, Intercom, Intruder Alarm
- Manage cardholders, including their access using authority or cardholder group
- Monitor Alarms and interact with the system from ACM Client Workstation
- Retrieve and report on stored system information
- Produce and print photo identification to cards
- Support Ethernet-ready controllers and readers
- Microsoft .NET Framework based User Interface
- Support Portable hand held reader interface
- MODBUS, BACNET, OPC, API, SDK integration with HVAC and other building function, BMS high level interface
- Failover & Automatic Server backup and archive technology per system
- Configure the site and monitor all integrated system components
- Graphical Map
- Support OSDP protocol
- Support Windows Services
- Integrate to Visitor Management
- IBMS/ODBC data exchange feature

OPERATION PLATFORMS

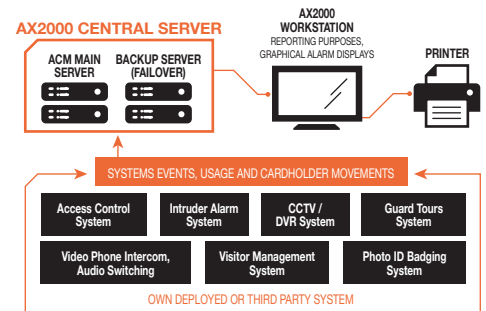
Access Control & Alarm Monitoring Manager (DI-AX2000) operates on MS Windows 7 (32/64-bit), Windows 10/11 (32/64-bit), and Windows Server 2008 R2 through 2022. This compatibility ensures seamless multitasking and enterprise-wide data sharing. The system's application computer centrally manages data distribution across connected servers.

STREAMLINED ARCHITECTURE

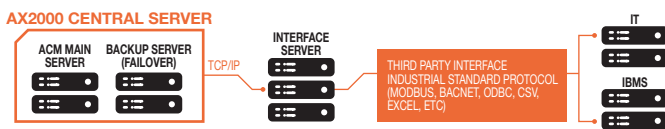
The Access Control & Alarm Monitoring Manager (DI-AX2000) interface leverages Microsoft's .NET framework, delivering a Windows-native user experience with an advanced "mouse-click" navigation scheme. This architecture ensures a responsive and intuitive security management environment.

INFORMATION PROCESSING

Access Control & Alarm Monitoring Manager (DI-AX2000) captures and logs all integrated system events, usage patterns, and cardholder movements in real time on a central server. This data supports comprehensive reporting and graphical alarm displays for enhanced situational awareness.



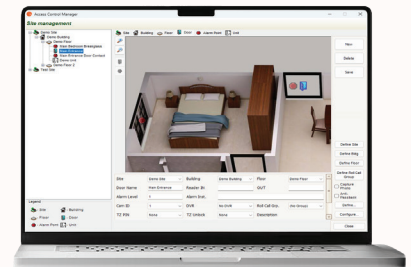
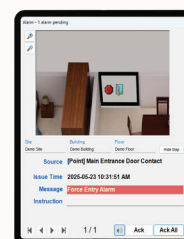
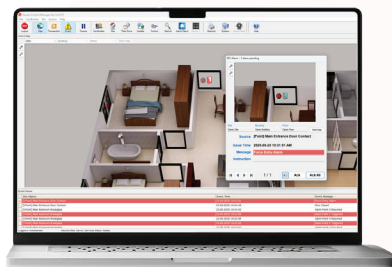
AUTOMATIC DATA IMPORT/ DATABASE INTERFACE



SECURITY SYSTEM INTEGRATION

Access Control & Alarm Monitoring Manager (DI-AX2000) integrates with both proprietary and third-party access control systems via ODBC. Its advanced card readers feature LCD displays and on-board databases, ensuring uninterrupted operation during network outages. System capabilities include multi-factor authentication, anti-pass-back, and time-based access rules.

- Multiple styles of Anti pass back / Group Anti pass back including Global, Local, Timed, Hard and Soft
- Automatically blocking of badges (in case of repeated wrong PIN code)
- Profile-controlled biometric verification
- In/out control; min./max. -person control
- Passage control with individual Time Slot
- Person- and room balancing, presence control
- Profile-controlled PIN code check, duress alarm
- Personal PIN code alteration (Intranet Dialog)
- Site Alarm Management – graphical map display
- Multiple styles of Interlock
- Access logbook
- Door management
- Roll Call Report
- Image verification



ALARM MONITORING & I/O CONTROL

Access Control & Alarm Monitoring Manager (DI-AX2000) provides real-time graphical and textual status updates for the entire system, including alarm prioritization, automated response protocols, and I/O device management.

- Control, monitor, and query for system device status including workstations, microcontrollers, readers, points and intrusion zones
- User definable alarm instructions and responses per alarm
- Graphical interface to easily create complex time intervals
- Manual and schedulable alarm monitoring and I/O control
- Alarm point monitoring (PC Computer or Android Tablet)
- Alarm monitor for operator assessment and acknowledgment
- Continuous tamper supervision of non-monitored points
- E-mail, GSM SMS and pager alarm notification
- User selectable alarm priorities per alarm
- Local and global alarm I/O linking
- Alarm graphics editor and viewer
- IP/Serial CCTV alarm interface

BIOMETRICS SUPPORT

Access Control & Alarm Monitoring Manager (DI-AX2000) supports integration with third-party biometric systems, including hand geometry, iris recognition, facial recognition, and fingerprint verification for enhanced identity validation.

VIDEO PHONE, INTERCOM, AND AUDIO INTEGRATION

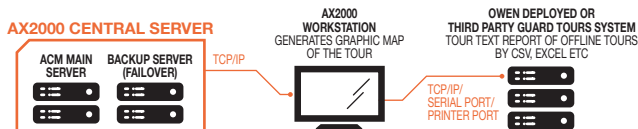
Access Control & Alarm Monitoring Manager (DI-AX2000) dynamically interfaces with external communication systems such as Video Phones, Intercoms and Audio inputs, enabling real-time response to security events.

PORTABLE DEVICE INTERFACE

The Access Control & Alarm Monitoring Manager (DI-AX2000) portable reader interface extends security validation to remote or temporary access points, supporting offline operation and QR-code-based visitor access.



GUARD TOURS



DYNAMIC PIN ASSIGNMENT

For temporary remote access, Access Control & Alarm Monitoring Manager (DI-AX2000) generates time-sensitive PINs via control room authorization. Both "PIN Only" and "Card + PIN" modes are supported, with automatic expiration ensuring security.

- No Key necessary for remote site
- Prevent key duplication
- Support multi remote site and multi user
- Both Card + Pin and Pin only supported
- Dynamic pin assignment can also apply for Alarm on/off feature

CCTV/NVR/DVR INTEGRATION

Access Control & Alarm Monitoring Manager (DI-AX2000) seamlessly integrates with DVRs, NVRs, and IP cameras, allowing live video feeds to be viewed without proprietary drivers. Event-triggered video clips, including pre-event recording, are accessible directly from alarm and access logs.

- With Live Video Forbidden Zones / Privacy Masking Algorithm (come with additional Module) within the pan-tilt range of outstation that prevent the operator from viewing camera image within these zones
- Access Control data and video are accessible through a common user interface
- Remote view and PTZ control of CCTV / NVR systems based on Map location
- Communication over TCP/IP networks
- Alarm from Access Control activate video recording / Photo Snapshot / video playback Access Control Event
- Recorded video footage is easy retrieve by means of linked Access Control Event
- Remote CCTV / NVR or Access Control Client Applications
- Remote view and PTZ control of CCTV / NVR systems by Alarm Trigger
- Video Management for Virtual Video Matrix

VISTOR MANAGEMENT

Access Control & Alarm Monitoring Manager (DI-AX2000)'s Visitor Management module monitors and controls temporary access, including temporary ID badge printing and visit logging.

- Quickly identify undesirable visitors through photos or other alerts on a temporary or permanent basis
- Record visitor details, sponsor and location and reason for visit
- Visitor search function e.g. searches for visitor's name, schedule time, etc.
- Simple check out for convenience reusable visitor cards
- Full transaction data of visits stored for reporting
- Trace facility and time control for visitor cards
- Control time permissions & Access levels
- ID badging printing capability
- Administrate visitor access control
- Serve for pre-scheduled visits
- Capture visitors' image
- Blacklist feature
- Powerful Reporting Tools



PERMIT CONTROL WITH INTEGRATED PHOTO ID BADGING

- Capture, import and display personnel photos
- Multiple badge layout to suit the application
- Design and print custom photo ID credentials
- Software Control Zoom and Contrast
- Enable photo ID badge production capabilities on any workstation
- Export images to external systems
- Badge layout design

OTHER FEATURES

- Integrated branch solution for automatic timecontrolled data exchange with substations via a broadband internet
- Configurable data import/export interface to external systems
- Real-time interface to connect to a IBMS or a facility management system by API
- Event-triggered actions
- CSV STREAM

HIGH-LEVEL INTERFACING WITH BMS AND THIRD-PARTY SYSTEMS

Access Control & Alarm Monitoring Manager (DI-AX2000) is designed for interoperability with third-party BMS and enterprise applications, ensuring broad system compatibility.

- Fully documented with sample COM application code for modelling in Visual Studio .NET
- Real-time event processing and command & control functionality
- API Application Programming Interface
- TCP/IP Protocol
- SDK Software Development Kit
- XML Interface
- OPC
- MODBUS
- BACNET

DATA OVERVIEW

Access Control & Alarm Monitoring Manager (DI-AX2000) consolidates security data into a centralized repository, enabling comprehensive analysis and strategic decision-making.

Integrated System Applications and Devices

- Access control
- Security Alarm Monitoring
- IP Camera, NVR Digital and CCTV Monitoring
- Elevator Controllers
- IBMS Interface / HVAC / Lighting Control
- Visitor Management / Vehicle Management
- Photo Management / verification
- Video Phone System
- IP Intercom
- Audio Monitoring System
- Interactive graphics application with drag and drop configuration

System Server

- Commercial PC with Intel i5 2.0G® or above
- Windows Server 2008 R2/ 2012 R2 /2016/2019/ 2022/ Windows 7 /Windows 8 / Windows 10/11 for Intel® platform with 8 GB RAM, 500G HD or above
- Backup concept depending on requirement

Communication

- Between Application Server and IP Controllers over Ethernet with TCP/IP
- Links between Network Door Controller (DI-DX100) and Door Module (DI-DX101), RS 485/4-wire or dial modem, using the BPA/9 protocol

Data Base Format

- SQL (relational)

SYSTEM TOPOLOGY

