

VTC-B500IS

5MP Full-color HD Analog Bullet Camera



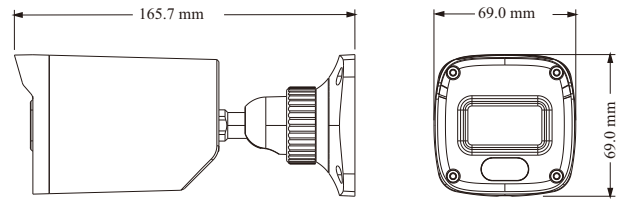
- 5MP 20fps/4MP real-time image, high resolution, true color
- AHD / TVI / CVI / CVBS standard and lossless video output
- Up to 1500 TVL resolution
- CMOS progressive scan, perfectly capturing the moving object
- Support OSD menu
- High speed, long distance and real time transmission
- Auto color to B / W at low illumination
- Support ICR switch, true day / night
- Support noise reduction function
- 20 ~ 30m LED view distance
- 24/7 full color imaging
- IP67 ingress protection
- Support COC
- Support coaxial audio transmission (Temporarily only valid in TVI signal mode)



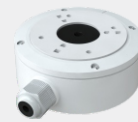
SPECIFICATIONS

Model	VTC-B500IS
Specifications	
Camera	
Image Sensor	1 / 2.5" CMOS
Resolution	5MP
Image Size	Max. 2944 × 1656 (16:9)
Video Output	AHD / TVI / CVI / CVBS
Audio	1CH built-in MIC
Image System	PAL / NTSC
Electronic Shutter	Auto; 1/50s~1/100000s (PAL); 1/60s~1/100000(NTSC)
LED Range	20 ~ 30 m
Frame Rate	TVI: 2944×1656@20fps, 2560×1440@25fps/30fps AHD: 2944×1656@20fps, 2560×1440@25fps/30fps CVI: 2560×1440@25fps/30fps CVBS: PAL/NTSC
Min. Illumination	0 lux (LED ON)
Lens	2.8 mm
Lens Mount	M12
S / N Ratio	≥52dB (AGC OFF)
Ingress Protection	IP 67
Functions	
Function Control	OSD (COC Control)
ICR	No
Digital WDR	Yes
Digital NR	Yes, 2D DNR
AGC	Yes
Auto White Balance	Yes
BLC	Yes
HLC	Yes
Sharpness	Yes
Smart LED	Yes
Image Setting	Yes
Defect Correction	Auto
Language	Chinese and English
Angle Adjustment	Pan: 0°~360°; Tilt: 0°~80°; Rotation: 0°~360°
Others	
Power Supply	DC12V (± 15%)
Power Consumption	LED OFF : < 1W; LED ON : < 4W
Working Environment	- 30 °C ~ 50 °C, 10 % ~ 90 % (relative humidity)
Dimensions (mm)	167.5 x 69 x 69
Weight (net)	Approx. 0.36KG

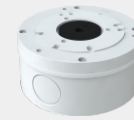
DIMENSIONS



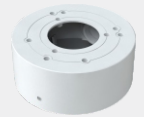
AVAILABLE ACCESSORIES



VTC-YXH0301



VTC-YXH0103



VTC-YXH0104



VTC-YXH0301+
VTC-YZJ0501



VTC-YXH0301+
VTC-YZJ0601



VTC-YXH0301+
VTC-YZJ0810

AVAILABLE MODEL

Available Model	VTC-B500IS
-----------------	------------